

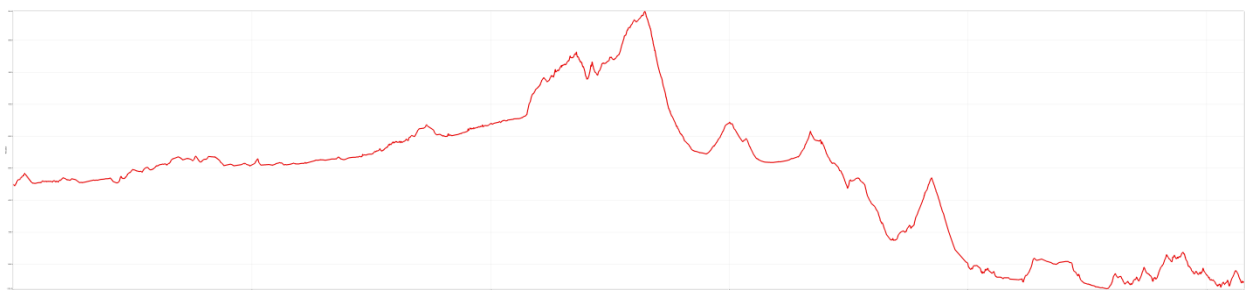
SAINTS^{TO} SINNERS BIKE RELAY

SALT LAKE CITY TO LAS VEGAS

522 MILES

JULY 27TH & 28TH, 2018

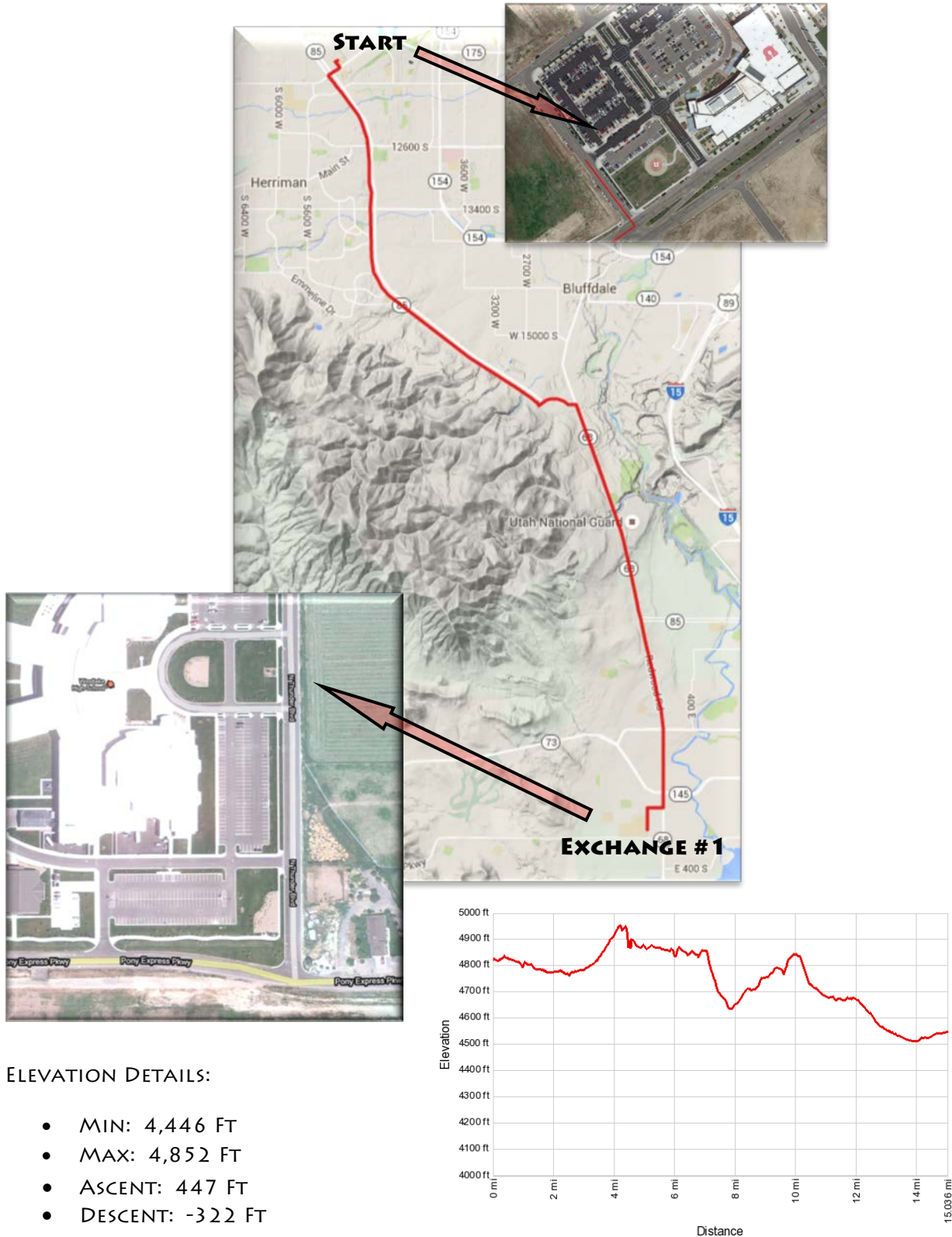
NEW THIS YEAR – 219 MILE "HALF RELAY" ENDING IN PANGUITCH



LEG 1 – 15.0 MILES

MODERATE

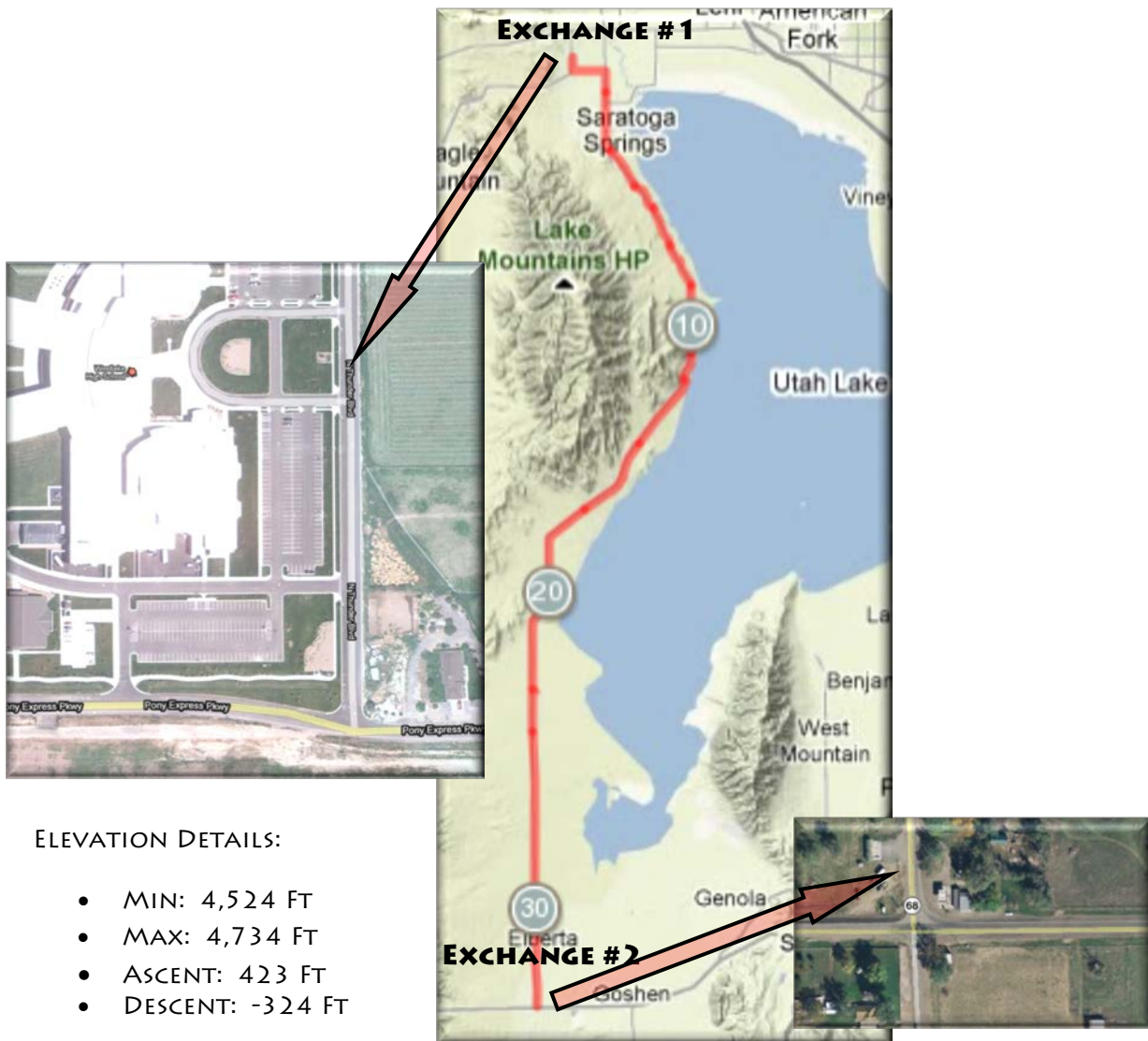
- START OF LEG GPS COORDINATES: **40.5423, -112.0152**
- RACE BEGINS AT: **THE UOFU SOUTH JORDAN HEALTH CENTER (5126 WEST DAYBREAK PARKWAY, SOUTH JORDAN)** RESTROOMS AVAILABLE AT START
- END OF LEG GPS COORDINATES: **40.3629, -111.9212**
- END OF LEG ADDRESS: *PONY EXPRESS PARKWAY AND THUNDER BLVD, SARATOGA SPRINGS, UT*



LEG 2 – 31.5 MILES

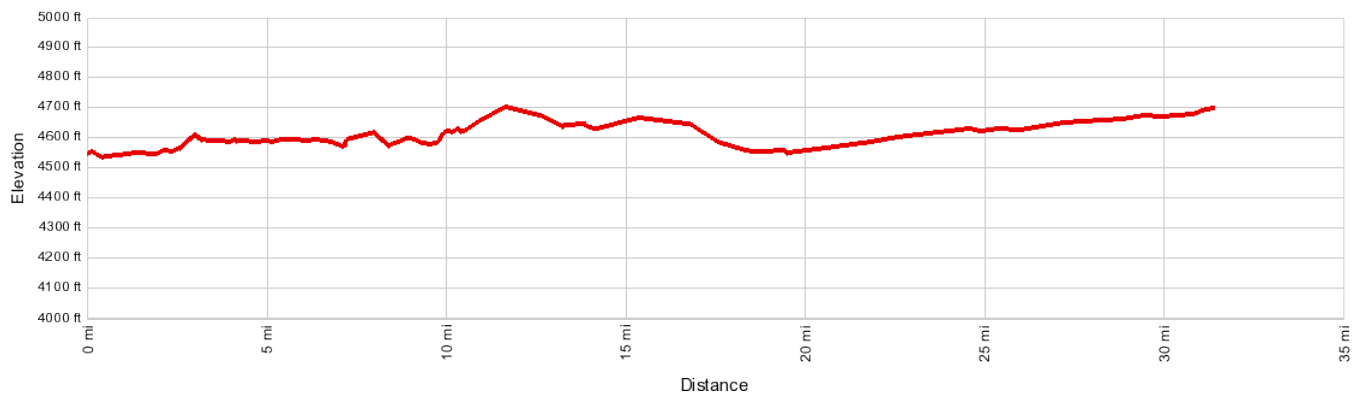
EASY - MODERATE

- START OF LEG GPS COORDINATES: **40.3629, -111.9212**
- START OF LEG ADDRESS: *PONY EXPRESS PARKWAY AND THUNDER BLVD, SARATOGA SPRINGS, UT*
- NO RESTROOMS AVAILABLE AT EXCHANGE #2
- PLEASE KEEP NOISE LEVELS LOW AT EXCHANGE POINT #2 DUE TO EARLY HOURS
- END OF LEG GPS COORDINATES: **39.9527, -111.9563**
- END OF LEG ADDRESS: *CORNER OF HIGHWAY 68 & HIGHWAY 6 IN UT*



ELEVATION DETAILS:

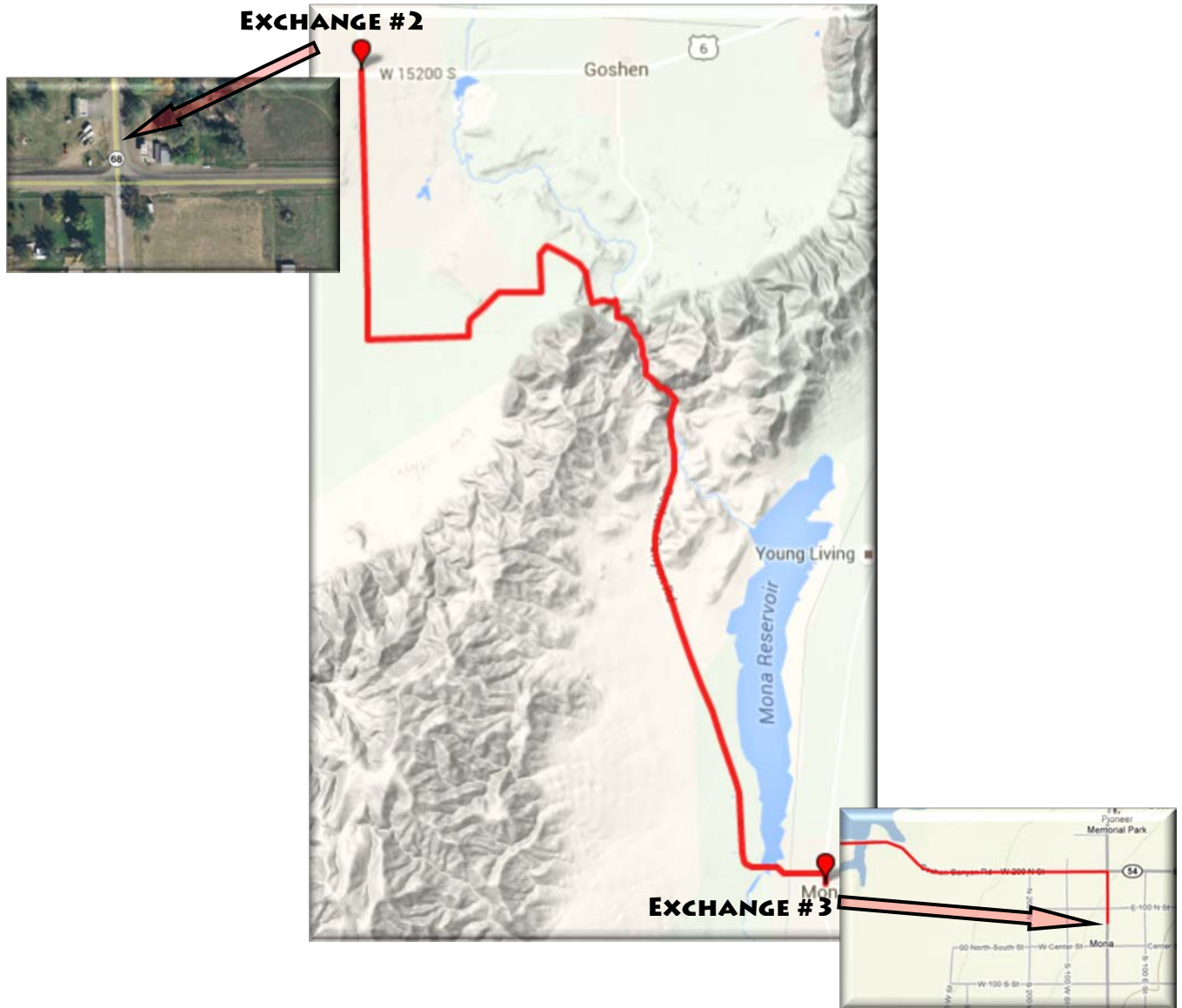
- MIN: 4,524 FT
- MAX: 4,734 FT
- ASCENT: 423 FT
- DESCENT: -324 FT



LEG 3 – 14.1 MILES

EASY - MODERATE

- START OF LEG GPS COORDINATES: **39.9527, -111.9563**
- START OF LEG ADDRESS: **CORNER OF HIGHWAY 68 & HIGHWAY 6 IN UT**
- NO RESTROOMS AVAILABLE AT EXCHANGE #2
- PLEASE KEEP NOISE LEVELS LOW AT EXCHANGE POINT #2 DUE TO EARLY HOURS
- END OF LEG GPS COORDINATES: **39.8169, -111.8552**
- END OF LEG ADDRESS: **50 N. MAIN STREET, MONA, UT**



ELEVATION DETAILS:

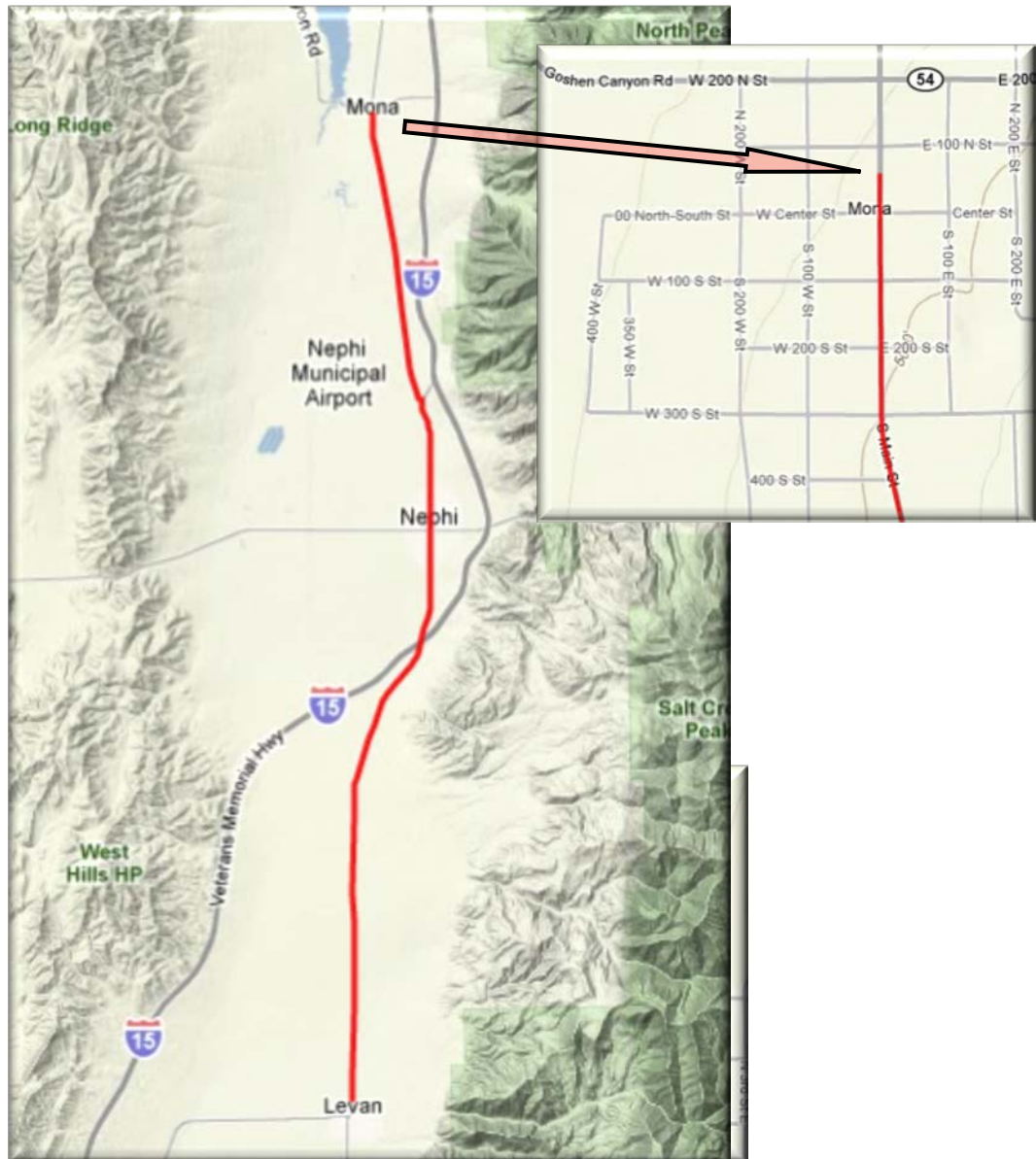
- MIN: 4,544 FT
- MAX: 5,052 FT
- ASCENT: 545 FT
- DESCENT: -310 FT



LEG 4 – 18.1 MILES

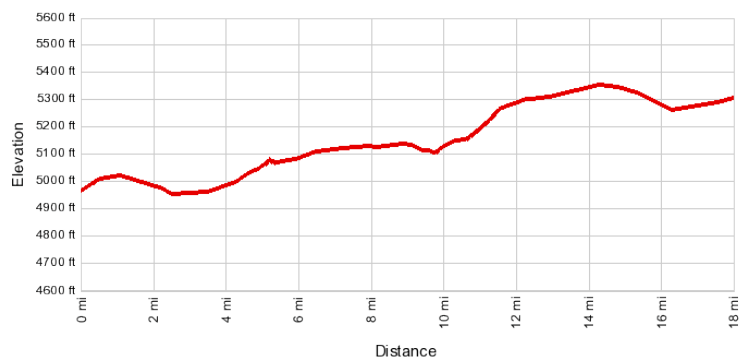
EASY - MODERATE

- START OF LEG GPS COORDINATES: **39.8169, -111.8552**
- START OF LEG ADDRESS: **50 N. MAIN STREET, MONA, UT**
- RESTROOMS AVAILABLE AT EXCHANGE #3 & EXCHANGE #4 (INSIDE LEVAN TOWN PARK)
- PLEASE KEEP NOISE LEVELS LOW AT EXCHANGE POINT #3 DUE TO EARLY HOURS
- END OF LEG GPS COORDINATES: **39.5632, -111.8620**
- END OF LEG ADDRESS: **HIGHWAY 28 AS YOU ENTER LEVAN**



ELEVATION DETAILS:

- MIN: 4,954 FT
- MAX: 5,374 FT
- ASCENT: 456 FT
- DESCENT: -207 FT



LEG 5 – 30.4 MILES

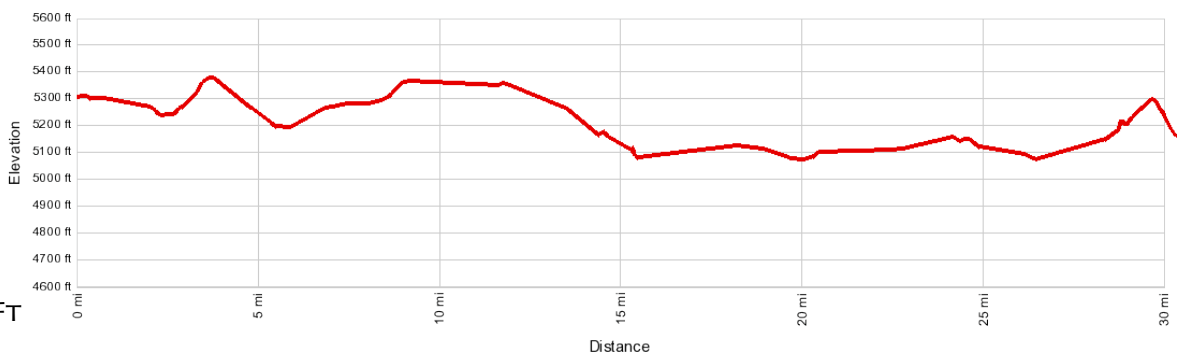
MODERATE

- START OF LEG GPS COORDINATES: **39.5632, -111.8620**
- START OF LEG ADDRESS: **HIGHWAY 28 AS YOU ENTER LEVAN**
- RESTROOMS AVAILABLE AT EXCHANGE #4 (LEVAN) AND EXCHANGE #5 (GUNNISON)
- ROUTE TURNS LEFT ONTO HWY 28 IN LEVAN (DOES NOT CONTINUE WEST AFTER CURVE)
- END OF LEG GPS COORDINATES: **39.1597, -111.8181**
- END OF LEG ADDRESS: **300 N. MAIN STREET, GUNNISON, UT**



ELEVATION DETAILS:

- MIN: 5,062 FT
- MAX: 5,400 FT
- ASCENT: 627 FT
- DESCENT: -732 FT



LEG 6 – 19.3 MILES

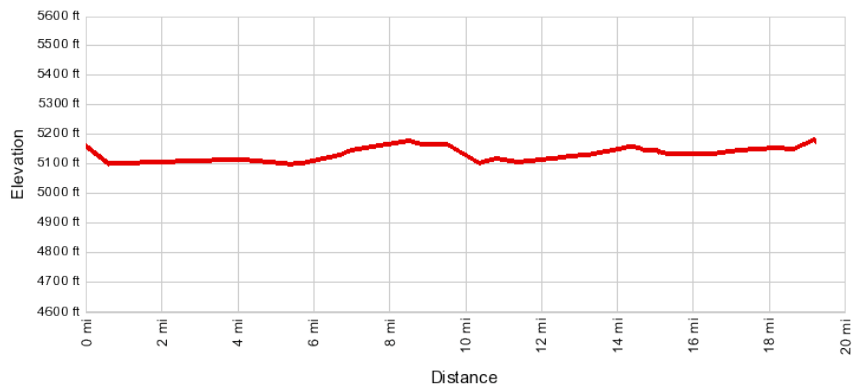
EASY

- START OF LEG GPS COORDINATES: **39.1597, -111.8181**
- START OF LEG ADDRESS: **300 N. MAIN STREET, GUNNISON, UT**
- PLEASE PARK ON OUTER PORTION OF PARKS (NOT ON THE ROUTE)
- RESTROOMS AVAILABLE AT EXCHANGE #5 (GUNNISON) & EXCHANGE #6 (AURORA)
- END OF LEG GPS COORDINATES: **38.9209, -111.9327**
- END OF LEG ADDRESS: **50 E. CENTER STREET, AURORA, UT**



ELEVATION DETAILS:

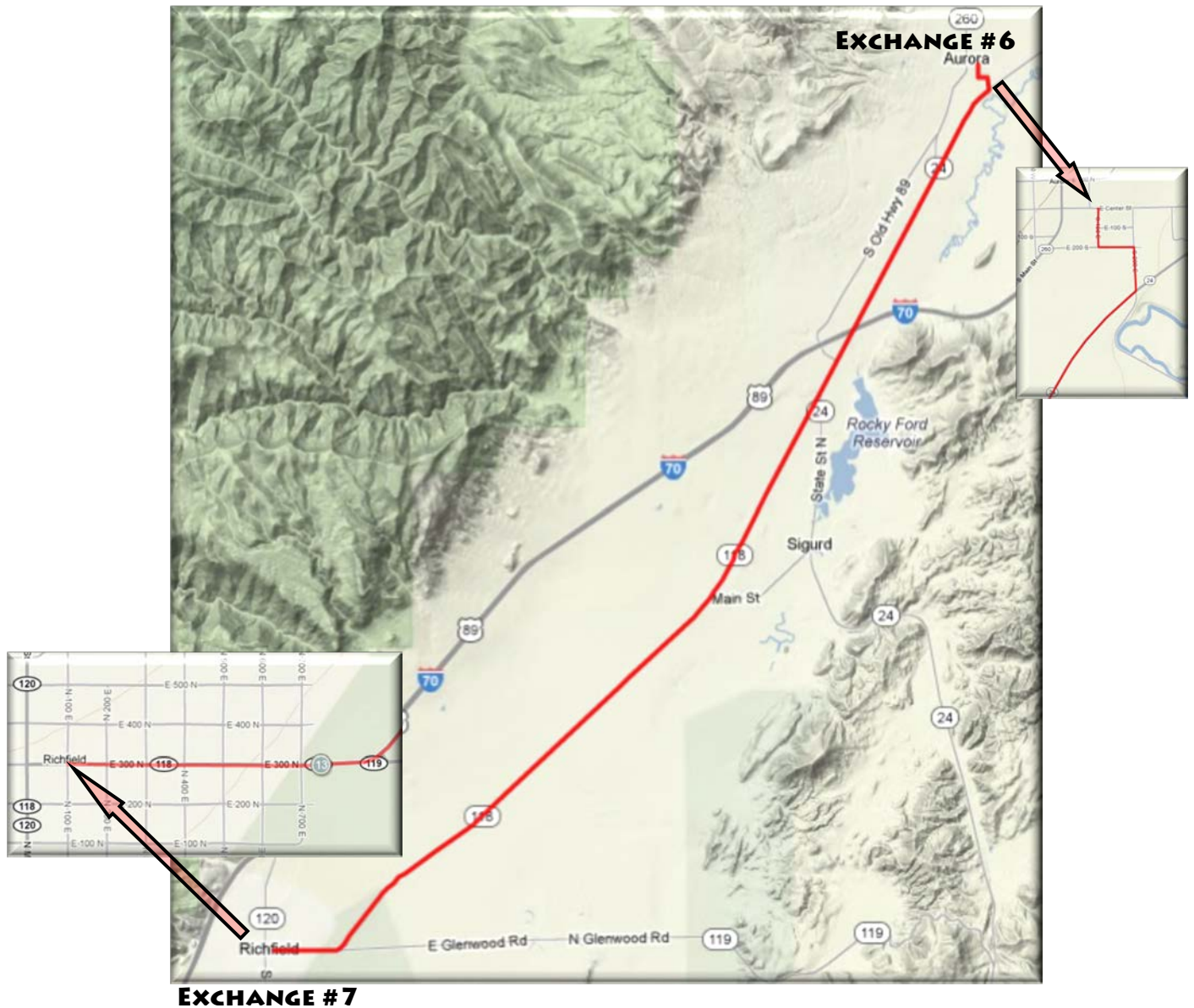
- MIN: 5,098 FT
- MAX: 5,207 FT
- ASCENT: 200 FT
- DESCENT: -184 FT



LEG 7 – 13.7 MILES

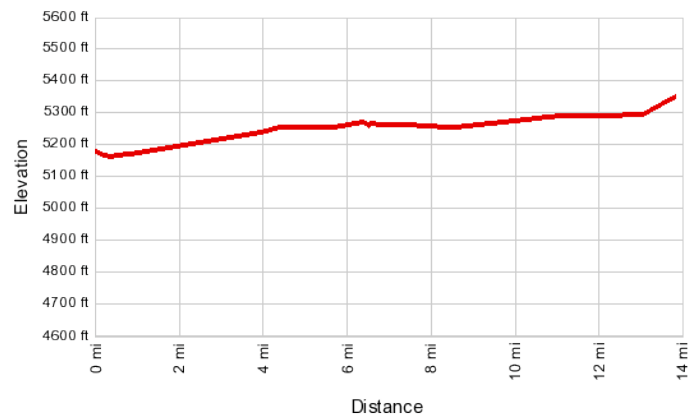
EASY

- START OF LEG GPS COORDINATES: **38.9209, -111.9327**
- START OF LEG ADDRESS: **50 E. CENTER STREET, AURORA, UT**
- RESTROOMS AVAILABLE AT EXCHANGE #6 (AURORA) AND EXCHANGE #7 (RICHFIELD)
- END OF LEG GPS COORDINATES: **38.7723, -112.0832**
- END OF LEG ADDRESS: **100 E. 300 N., RICHFIELD, UT**



ELEVATION DETAILS:

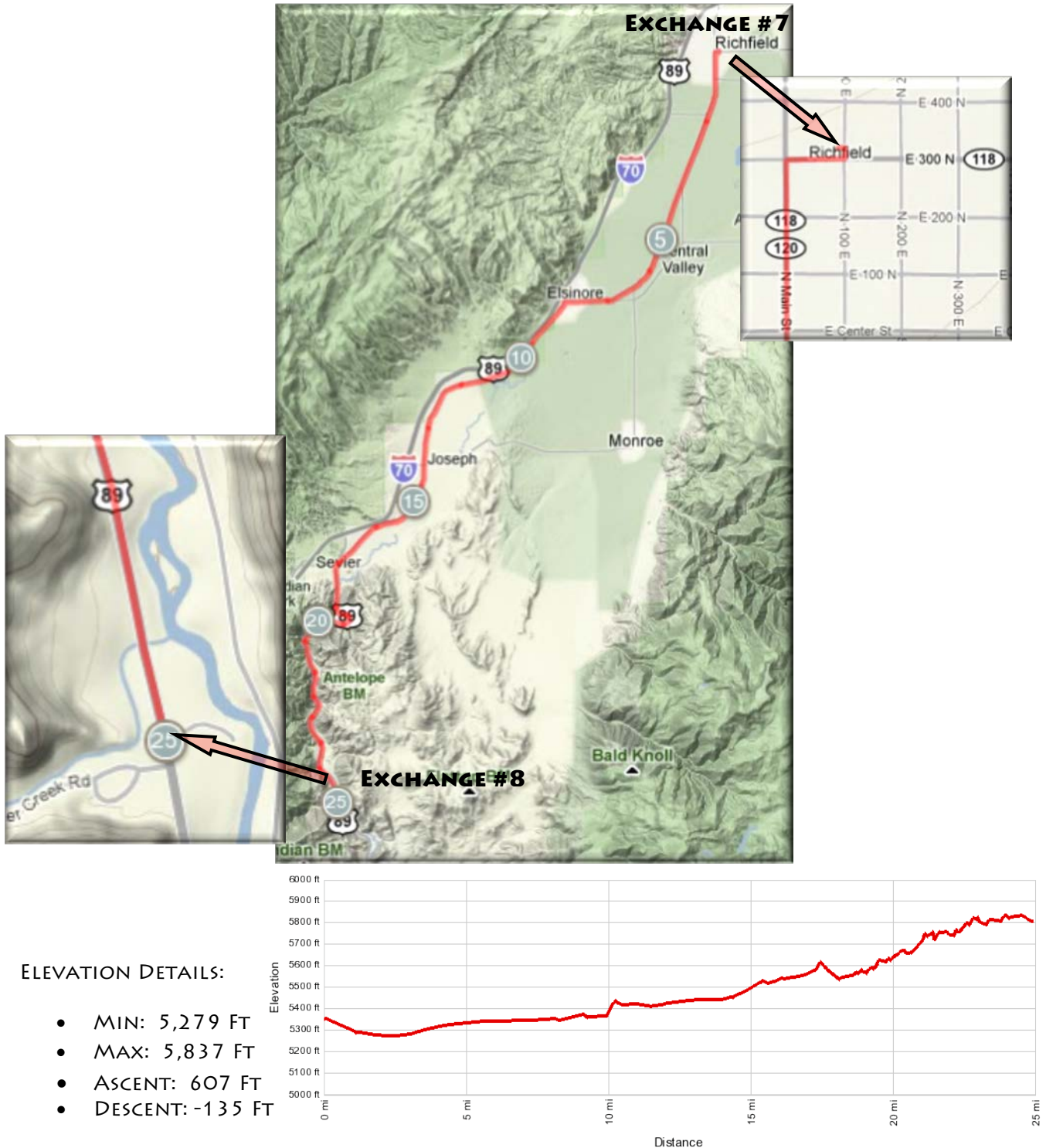
- MIN: 5,187 FT
- MAX: 5,364 FT
- ASCENT: 180 FT
- DESCENT: - 33 FT



LEG 8 – 24.9 MILES

MODERATE

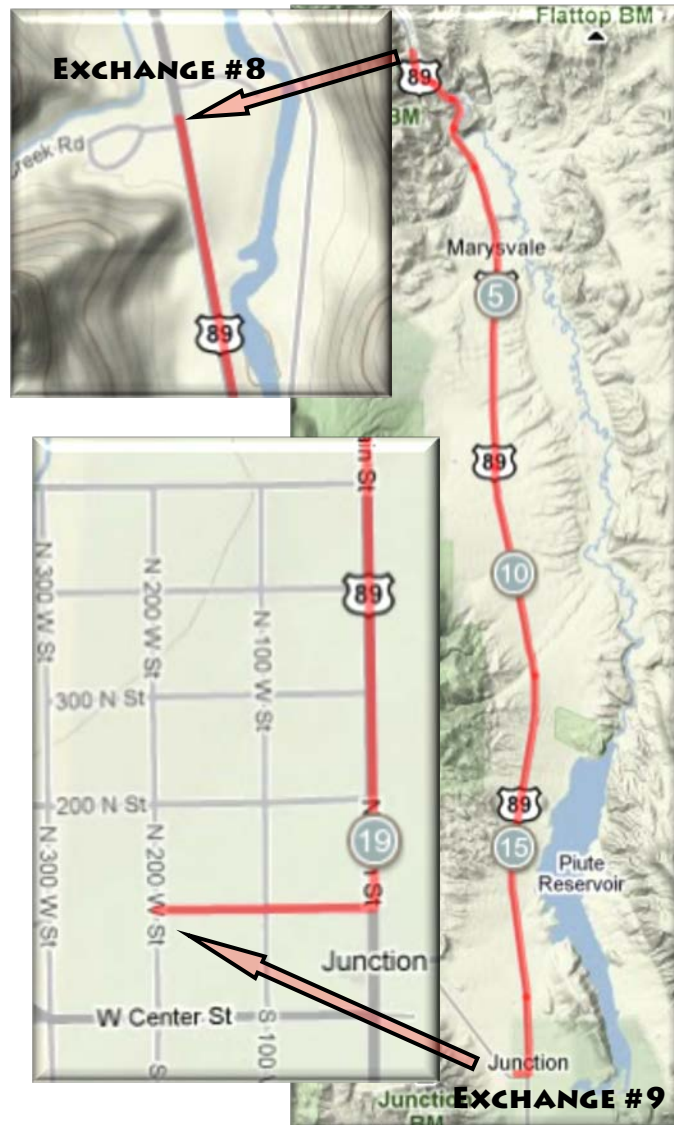
- START OF LEG GPS COORDINATES: **38.7723, -112.0832**
- START OF LEG ADDRESS: **100 E. 300 N., RICHFIELD, UT**
- EXCHANGE #8 PARKING LOCATED AT REST STOP TO THE WEST OR EAST OF HWY 89
- RESTROOMS AVAILABLE AT EXCHANGE #7 (RICHFIELD) AND EXCHANGE #8
- END OF LEG GPS COORDINATES: **38.5037, -112.2585**
- END OF LEG ADDRESS: **HIGHWAY 89 JUST SOUTH OF BIG ROCK CANDY MOUNTAIN**



LEG 9 – 19.4 MILES

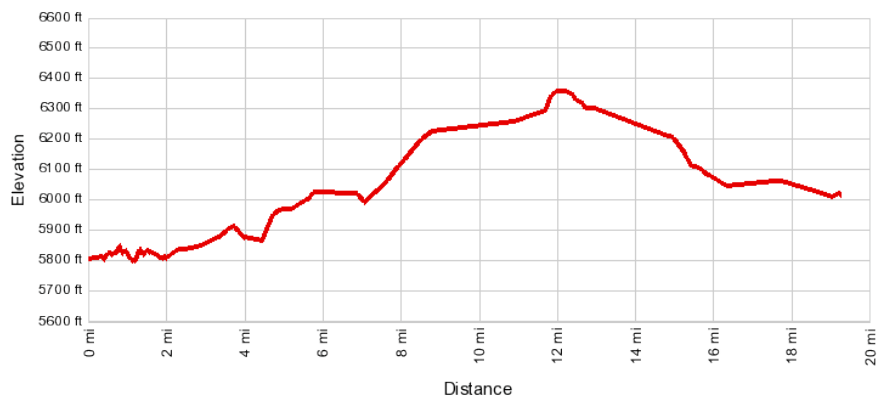
EASY - MODERATE

- START OF LEG GPS COORDINATES: **38.5037, -112.2585**
- START OF LEG ADDRESS: **HIGHWAY 89 JUST SOUTH OF BIG ROCK CANDY MOUNTAIN**
- EXCHANGE #8 PARKING LOCATED AT REST STOP TO THE WEST OR EAST OF HWY 89
- RESTROOMS AVAILABLE AT EXCHANGE #8 AND EXCHANGE #9 (JUNCTION)
- END OF LEG GPS COORDINATES: **38.2369, -112.2246**
- END OF LEG ADDRESS: **100 N. 200 W., JUNCTION, UT**



ELEVATION DETAILS:

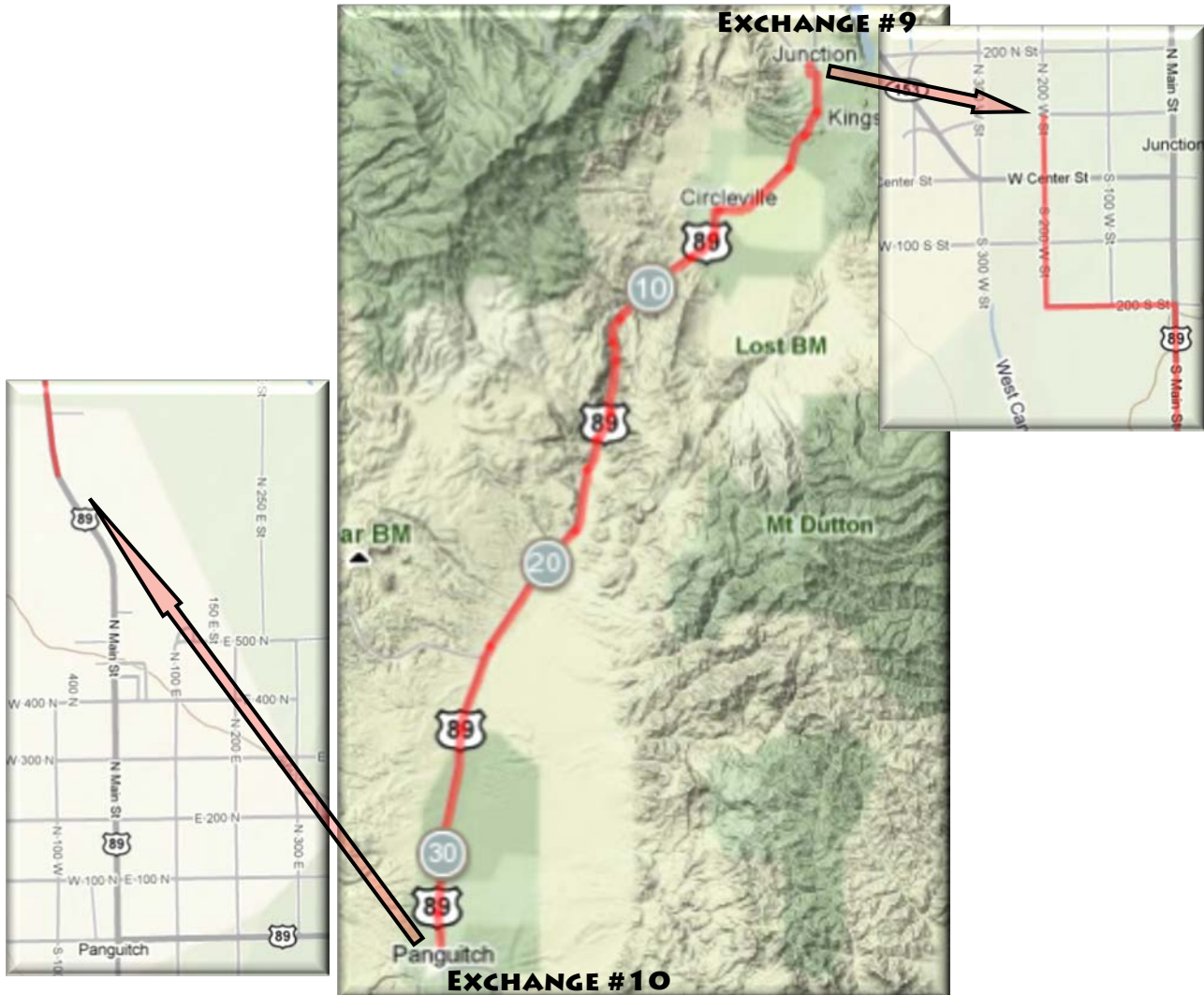
- MIN: 5,807 FT
- MAX: 6,381 FT
- ASCENT: 591 FT
- DESCENT: -387 FT



LEG 10 – 32.9 MILES

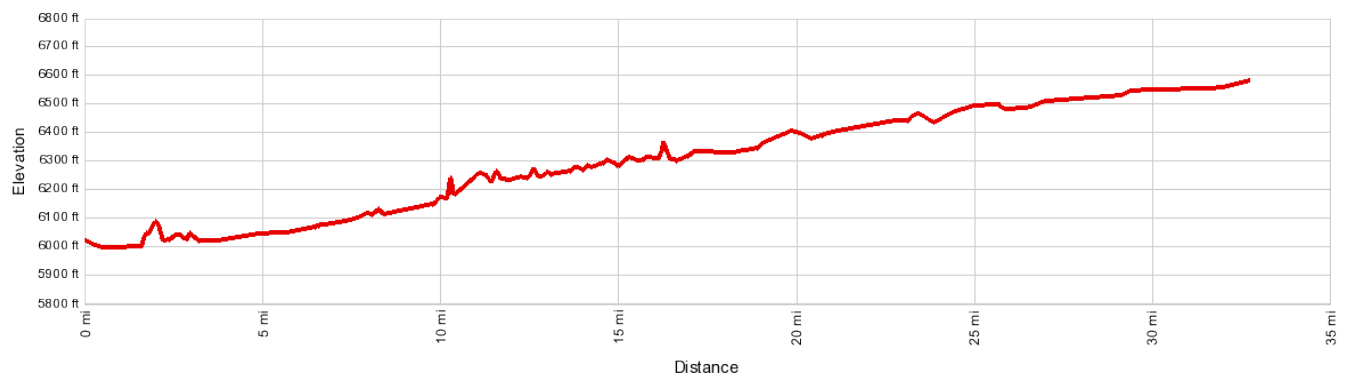
MODERATE

- START OF LEG GPS COORDINATES: **38.2369, -112.2246**
- START OF LEG ADDRESS: **100 N. 200 W., JUNCTION, UT**
- EXCHANGE #10 ADDITIONAL PARKING LOCATED ACROSS THE CANAL TO THE EAST
- RESTROOMS AVAILABLE AT EXCHANGE #9 (JUNCTION) & EXCHANGE #10 (PANGUITCH)
- END OF LEG GPS COORDINATES: **37.8343, -112.4374**
- END OF LEG ADDRESS: **HIGHWAY 89 JUST BEFORE ENTERING PANGUITCH, UT**
- **NOTE: "HALF RELAY" TEAMS FINISH IN PANGUITCH & DON'T CONTINUE**



ELEVATION DETAILS:

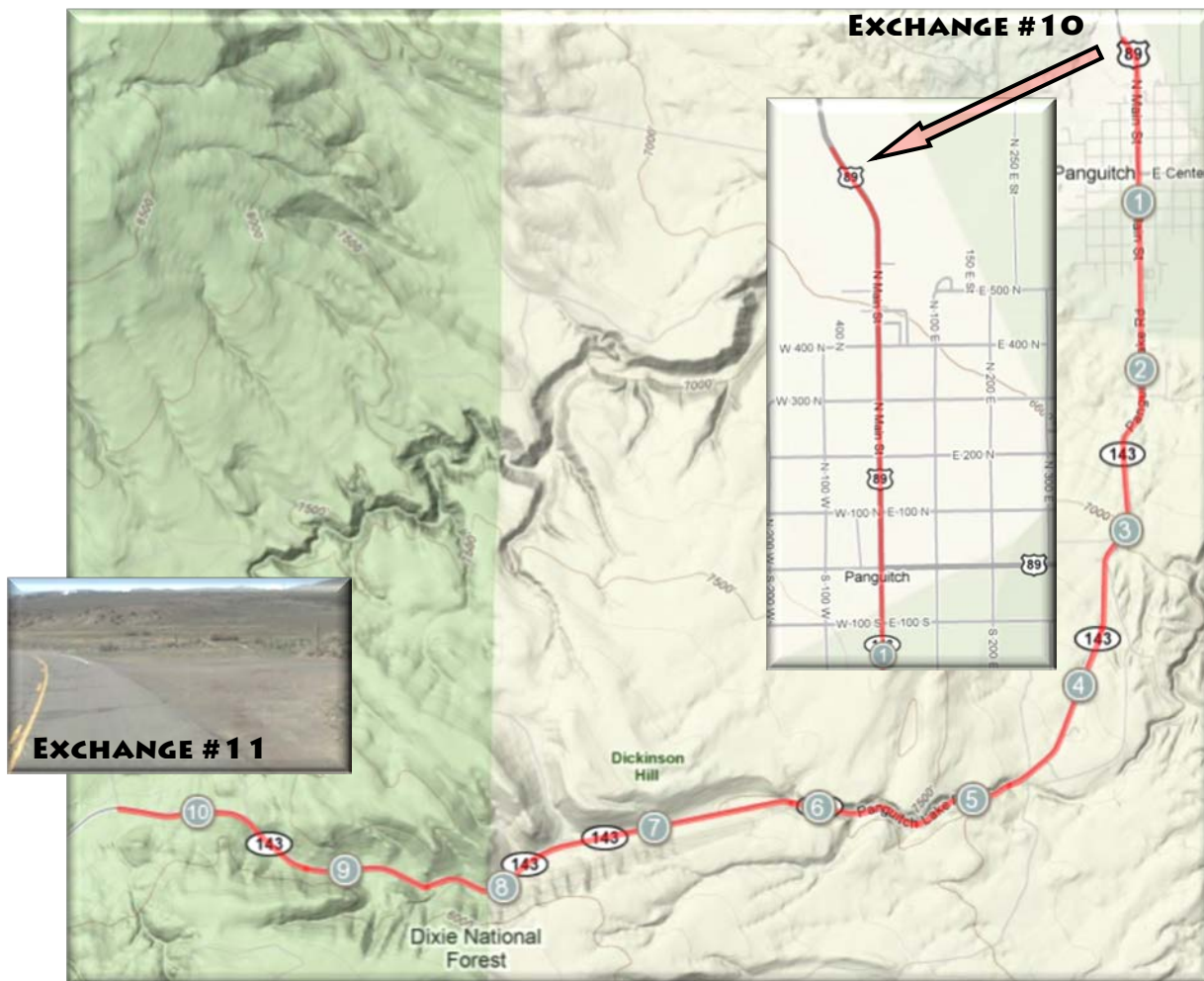
- MIN: 5,991 FT
 - MAX: 6,588 FT
- ASCENT: 689 FT
DESCENT: -128 FT



LEG 11 – 10.5 MILES (FOR TEAMS CONTINUING TO VEGAS)

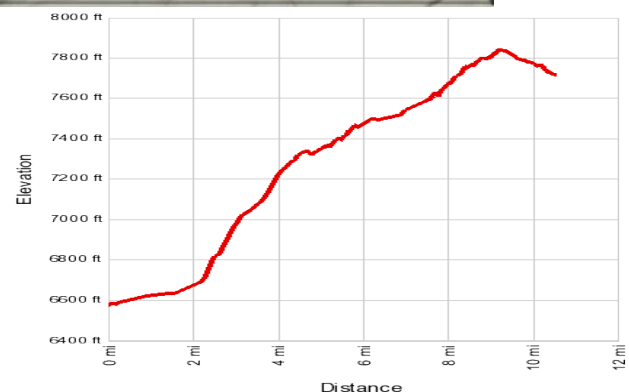
HARD

- START OF LEG GPS COORDINATES: **37.8343, -112.4374**
- START OF LEG ADDRESS: **HIGHWAY 89 JUST NORTH OF PANGUITCH**
- EXCHANGE #10 ADDITIONAL PARKING LOCATED ACROSS THE CANAL TO THE EAST
- **"ROYALTY OF THE MOUNTAIN"** CHALLENGE – AWARDS FOR FASTEST MALE AND FEMALE FROM EXCHANGE #10 TO EXCHANGE #12
- VEHICLE #2 WILL HEAD NORTH TO HWY 20 AND CONNECT WITH I-15 TO HEAD SOUTH TO CEDAR CITY AND EXCHANGE #15 (UNLESS A RIDER IN VEHICLE #2 IS PARTICIPATING IN THE "ROYALTY OF THE MOUNTAIN" CHALLENGE)
- RESTROOMS AVAILABLE AT EXCHANGE #10 (PANGUITCH) BUT NOT EXCHANGE #11
- END OF LEG GPS COORDINATES: **37.7678, -112.5472**
- END OF LEG ADDRESS: **10.5 MILES DOWN COARSE FROM EXCHANGE #10 ON HWY 143**



ELEVATION DETAILS:

- MIN: 6,588 FT
- MAX: 7,877 FT
- ASCENT: 1,240 FT
- DESCENT: -98 FT



LEG 12 – 10.2 MILES

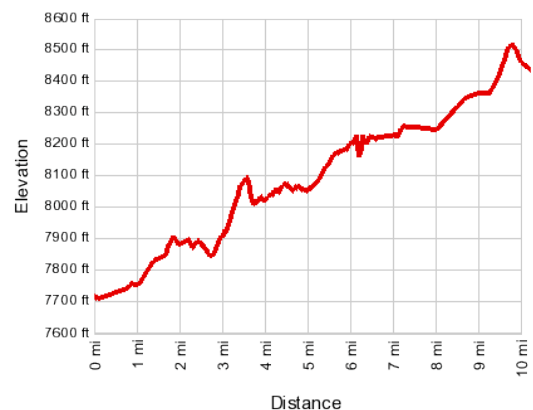
HARD

- START OF LEG GPS COORDINATES: **37.7678, -112.5472**
- START OF LEG ADDRESS: **10.5 MILES DOWN COARSE FROM EXCHANGE #10 ON HWY 143**
- **"ROYALTY OF THE MOUNTAIN"** ENDS AT EXCHANGE #12
- PLEASE PULL COMPLETELY OFF THE ROAD AND DO NOT MAKE ILLEGAL U-TURNS
- NO RESTROOMS ARE AVAILABLE AT EXCHANGE #11 OR #12
- END OF LEG GPS COORDINATES: **37.6811, -112.6654**
- END OF LEG ADDRESS: **JUST SOUTHEAST OF PANGUITCH LAKE ON HWY 143**



ELEVATION DETAILS:

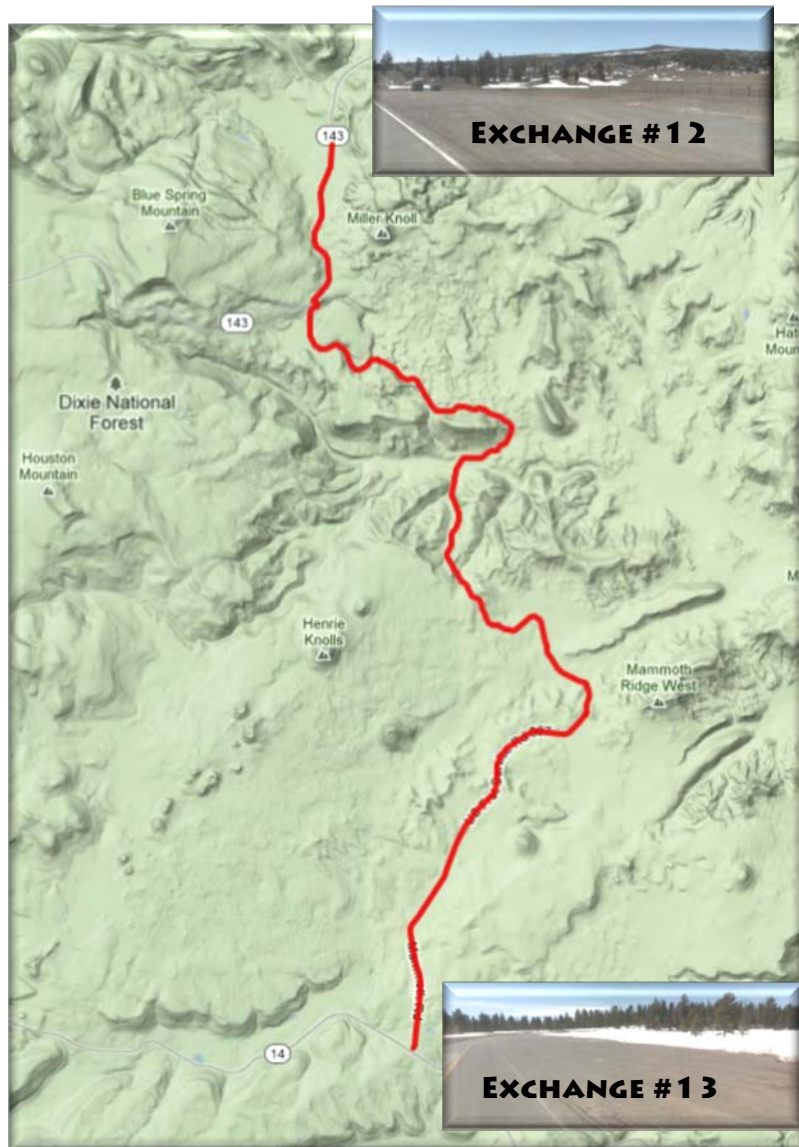
- MIN: 7,694 FT
- MAX: 8,563 FT
- ASCENT: 1,105 FT
- DESCENT: -377 FT



LEG 13 – 16.8 MILES

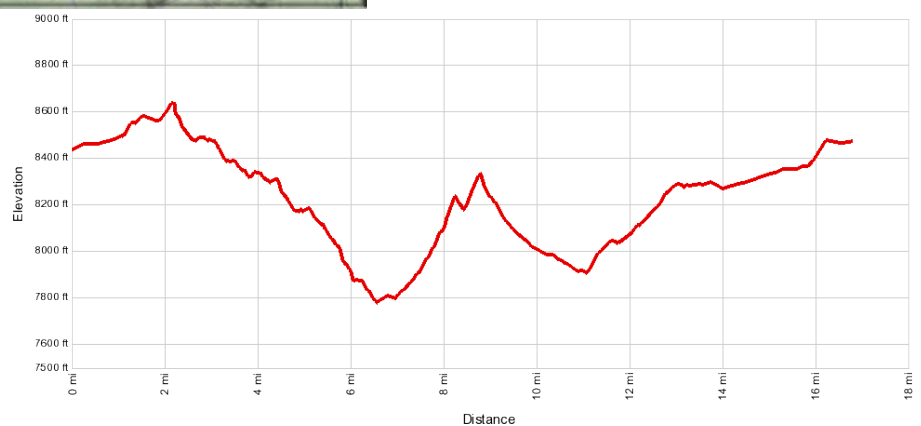
MODERATE - HARD

- START OF LEG GPS COORDINATES: **37.6811, -112.6654**
- **START OF LEG ADDRESS:** *JUST SOUTHEAST OF PANGUITCH LAKE ON HWY 143*
- RESTROOMS ARE NOT AVAILABLE AT EXCHANGE #12 OR #13
- END OF LEG GPS COORDINATES: **37.5186, -112.6457**
- END OF LEG ADDRESS: *INTERSECTION OF HWY 14 & MAMMOTH RD*



ELEVATION DETAILS:

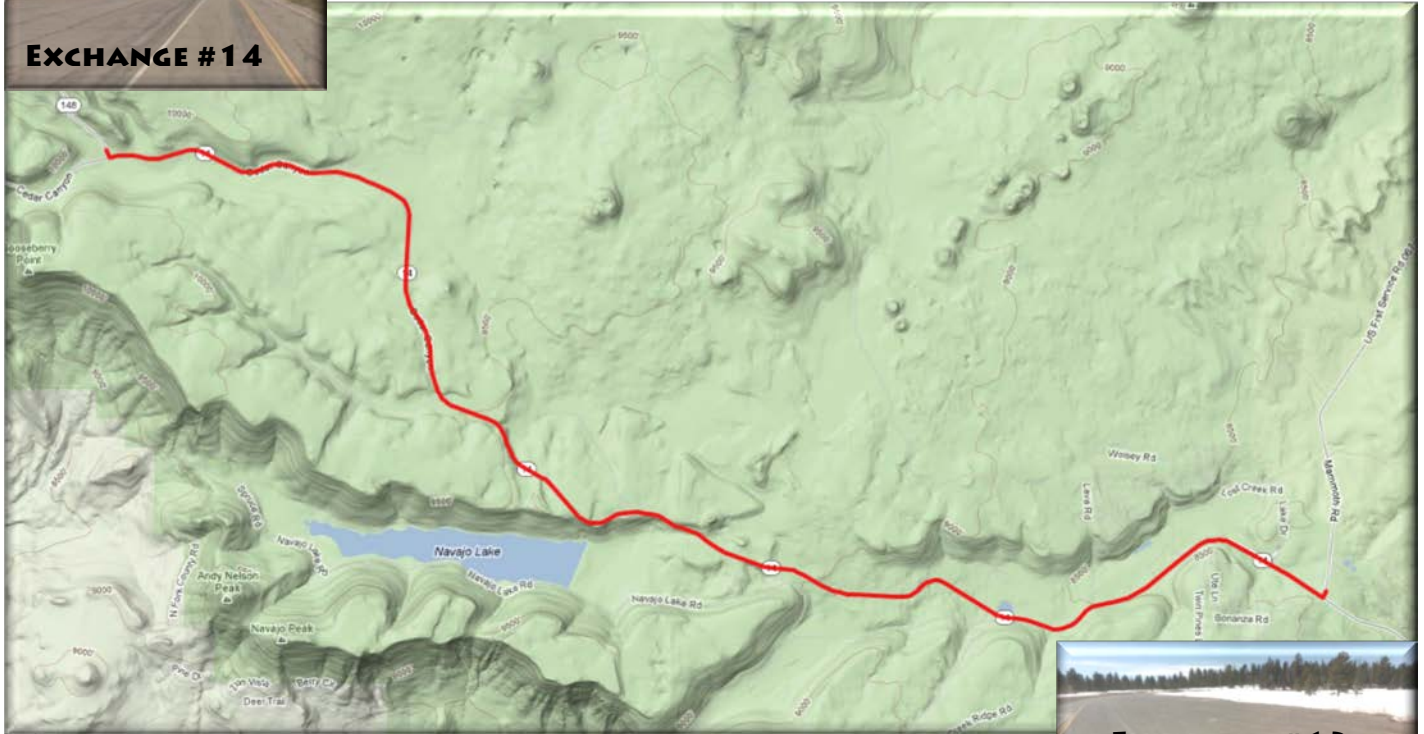
- MIN: 7,793 FT
- MAX: 8,623 FT
- ASCENT: 1,438 FT
- DESCENT: -1278 FT



LEG 14 - 13.3 MILES

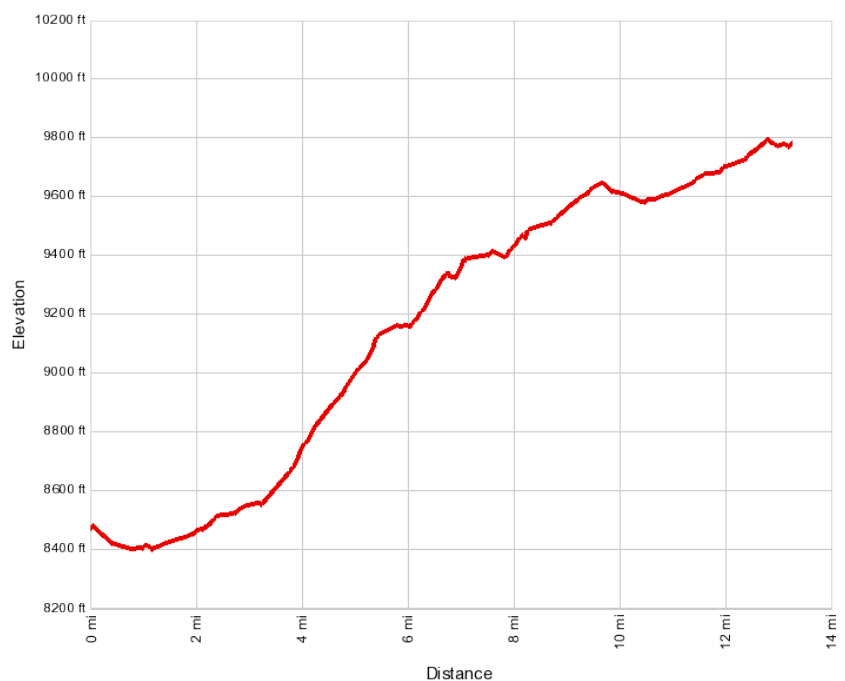
HARD

- START OF LEG GPS COORDINATES: **37.5186, -112.6457**
- START OF LEG ADDRESS: **INTERSECTION OF HWY 14 AND MAMMOTH RD**
- EXCHANGE #14 WILL BE ON THE RIGHT HAND SIDE OF ROAD
- RESTROOMS ARE NOT AVAILABLE AT EXCHANGE #13 OR #14
- END OF LEG GPS COORDINATES: **37.5732, -112.8366**
- END OF LEG ADDRESS: **INTERSECTION OF HWY 148 & HWY 14**



ELEVATION DETAILS:

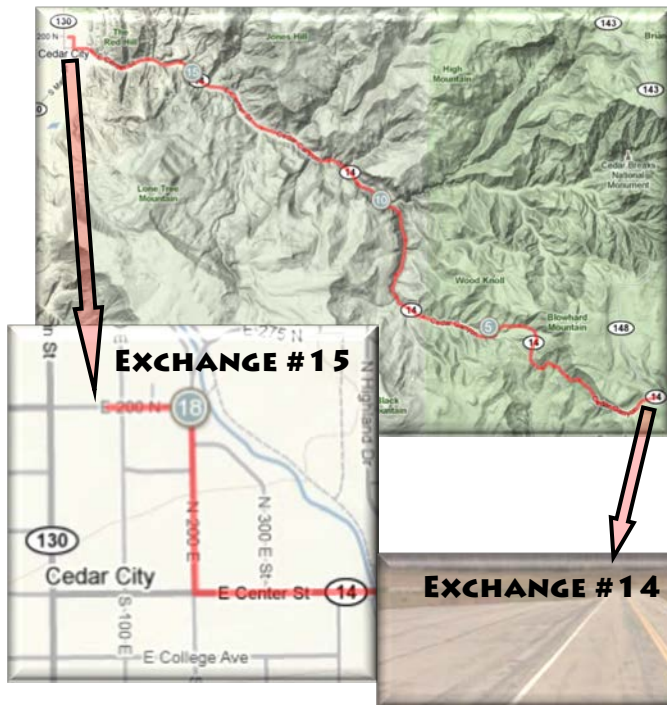
- MIN: 9,798 FT
- MAX: 8,401 FT
- ASCENT: 1,439 FT
- DESCENT: -147 FT



LEG 15 – 18.2 MILES

EASY

- START OF LEG GPS COORDINATES: **37.5732, -112.8366**
- START OF LEG ADDRESS: ***JUST BEFORE INTERSECTION OF HWY 148 & HWY 14***
- TURN OFF OF CENTER STREET ONTO 200 EAST AND THEN ONTO 200 NORTH
- RESTROOMS AVAILABLE AT EXCHANGE #15 IN THE PARK
- **BE VERY CAREFUL OF SHARP TURNS AT HIGH SPEEDS AND PAY CLOSE ATTENTION TO WILDLIFE**
- END OF LEG GPS COORDINATES: **37.6810, -113.0607**
- END OF LEG ADDRESS: ***200 N. 100 E., CEDAR CITY, UT***



ELEVATION DETAILS:

- MIN: 5,830 FT
- MAX: 9,934 FT
- ASCENT: 147 FT
- DESCENT: -4,126 FT

LEG 16 – 19.2 MILES

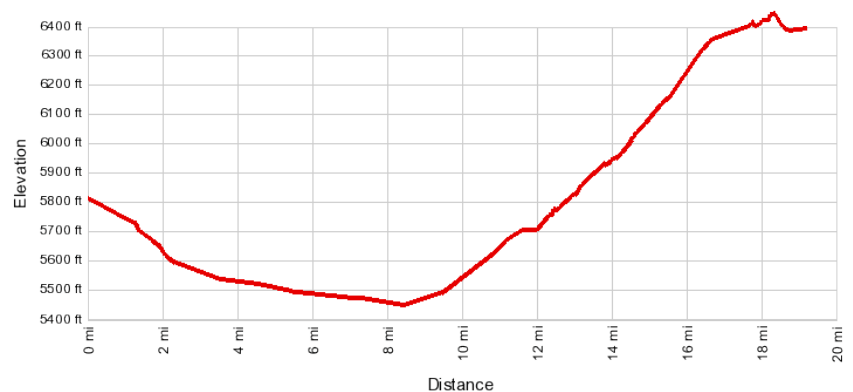
MODERATE

- START OF LEG GPS COORDINATES: **37.6810, -113.0607**
- START OF LEG ADDRESS: **100 E. 200 N., CEDAR CITY, UT**
- VEHICLE #1 (FOR 10 PERSON TEAMS) WILL LEAVE THE COURSE AND TAKE I-15 TO ST. GEORGE AND AWAIT THEIR TEAM MEMBERS AT EXCHANGE #20 IN SANTA CLARA
- PLEASE PULL COMPLETELY OFF THE ROAD AND DO NOT MAKE ILLEGAL U-TURNS
- RESTROOMS AVAILABLE AT EXCHANGE #15 IN THE PARK BUT NOT AT EXCHANGE #16
- END OF LEG GPS COORDINATES: **37.6113, -113.3838**
- END OF LEG ADDRESS: **ALONG HIGHWAY 56**



ELEVATION DETAILS:

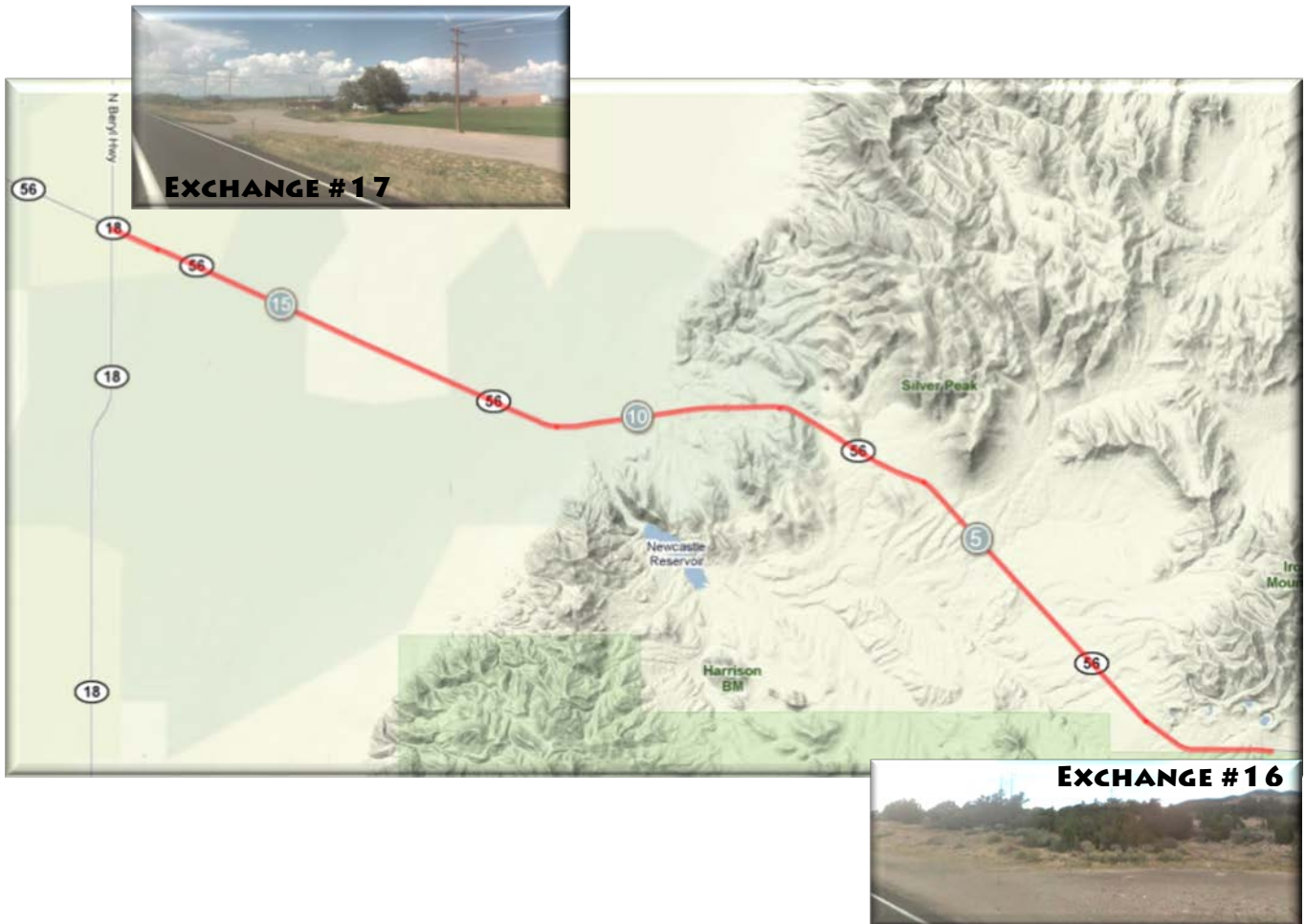
- MIN: 5,453 FT
- MAX: 6,467 FT
- ASCENT: 1,016 FT
- DESCENT: -387 FT



LEG 17 – 17.2 MILES

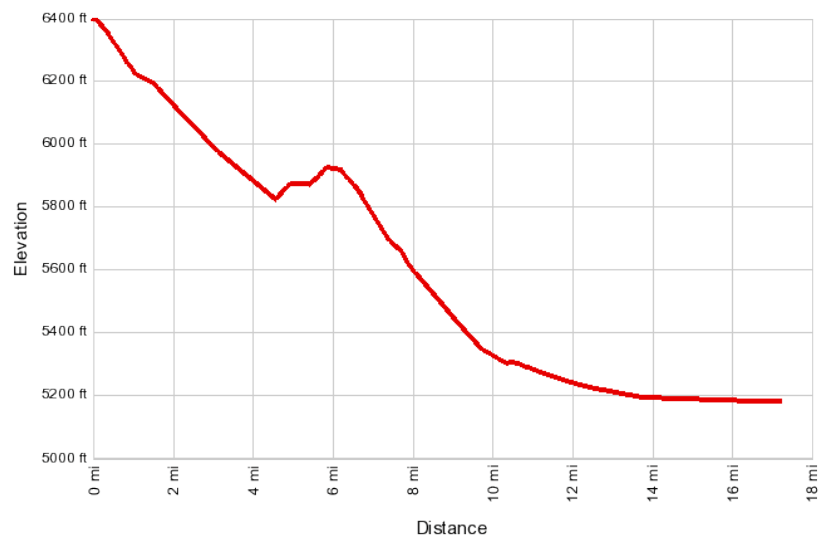
EASY

- START OF LEG GPS COORDINATES: **37.6113, -113.3838**
- START OF LEG ADDRESS: **ALONG HIGHWAY 56**
- COURSE CONTINUES ON HWY 18 (TURN LEFT AT BERYL JUNCTION – EXCHANGE #17)
- NO RESTROOMS AVAILABLE AT EITHER EXCHANGE #16 OR #17
- END OF LEG GPS COORDINATES: **37.7093, -113.6563**
- END OF LEG ADDRESS: **INTERSECTION OF HWY 18 & HWY 56 (BERYL JUNCTION)**



ELEVATION DETAILS:

- MIN: 5,177 FT
- MAX: 6,407 FT
- ASCENT: 92 FT
- DESCENT: -1,273 FT



LEG 18 – 10.8 MILES

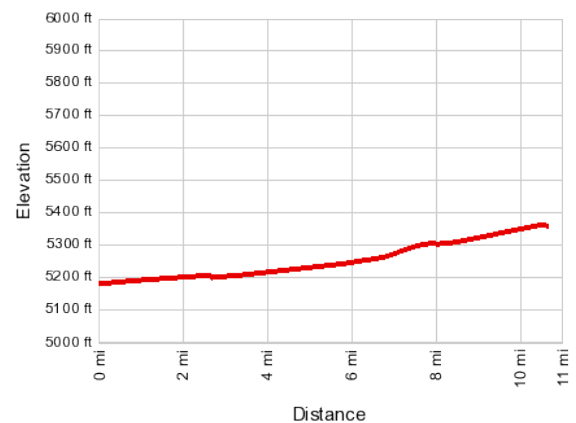
EASY

- START OF LEG GPS COORDINATES: **37.7093, -113.6563**
- START OF LEG ADDRESS: **INTERSECTION OF HWY 18 & HWY 56 (BERYL JUNCTION)**
- PLEASE PULL COMPLETELY OFF THE ROAD AND DO NOT MAKE ILLEGAL U-TURNS
- NO RESTROOMS AVAILABLE AT EITHER EXCHANGE #17 OR #18
- END OF LEG GPS COORDINATES: **37.5734, -113.7046**
- END OF LEG ADDRESS: **INTERSECTION OF HWY 18 & HWY 219 IN ENTERPRISE, UT**



ELEVATION DETAILS:

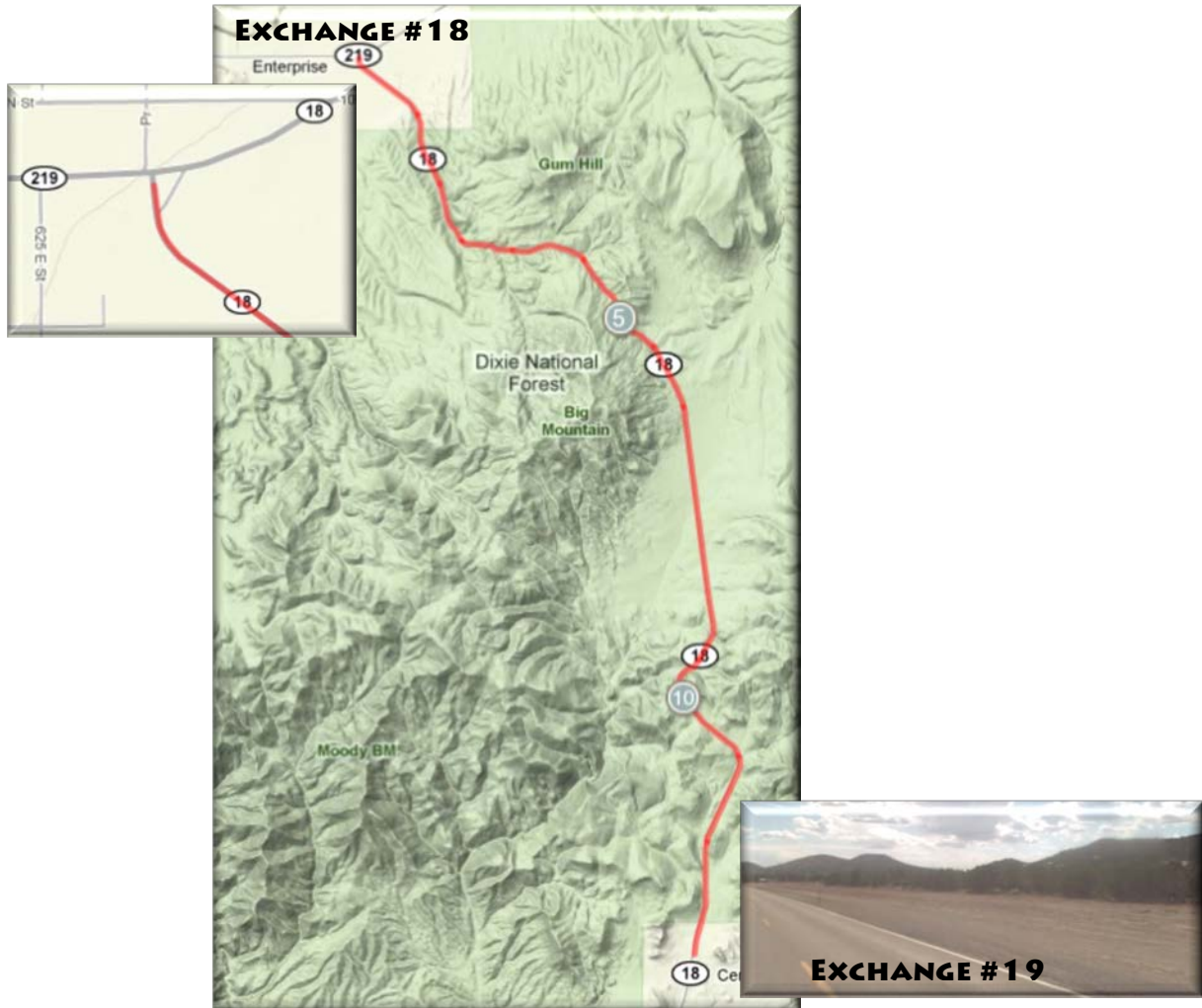
- MIN: 5,184 FT
- MAX: 5,384 FT
- ASCENT: 204 FT
- DESCENT: -6 FT



LEG 19 – 13.2 MILES

MODERATE - HARD

- START OF LEG GPS COORDINATES: **37.5734, -113.7046**
- START OF LEG ADDRESS: *INTERSECTION OF HWY 18 & HWY 219 IN ENTERPRISE, UT*
- TURN LEFT AT HWY 18 & HWY 219 JUNCTION (TOWARD ST. GEORGE)
- NO RESTROOMS AVAILABLE AT EITHER EXCHANGE #18 OR #19
- END OF LEG GPS COORDINATES: **37.4224, -113.6310**
- END OF LEG ADDRESS: *JUST OFF OF HWY 18 IN CENTRO, UT*



ELEVATION DETAILS:

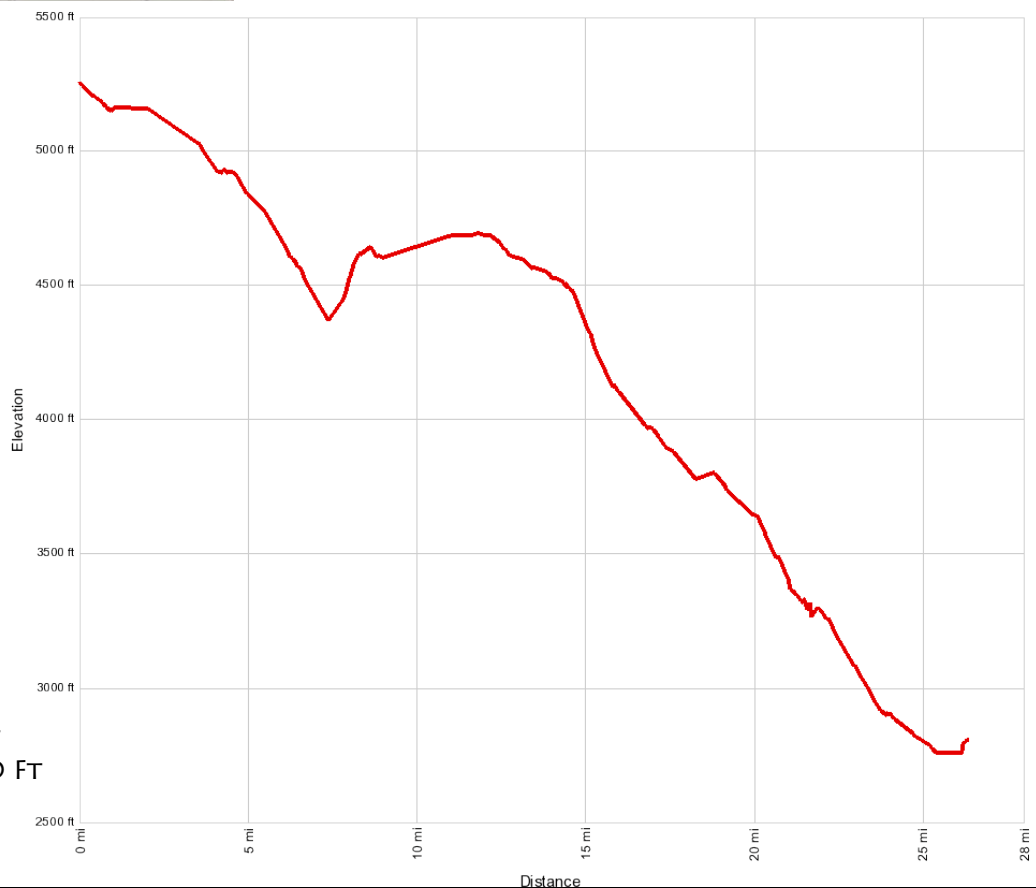
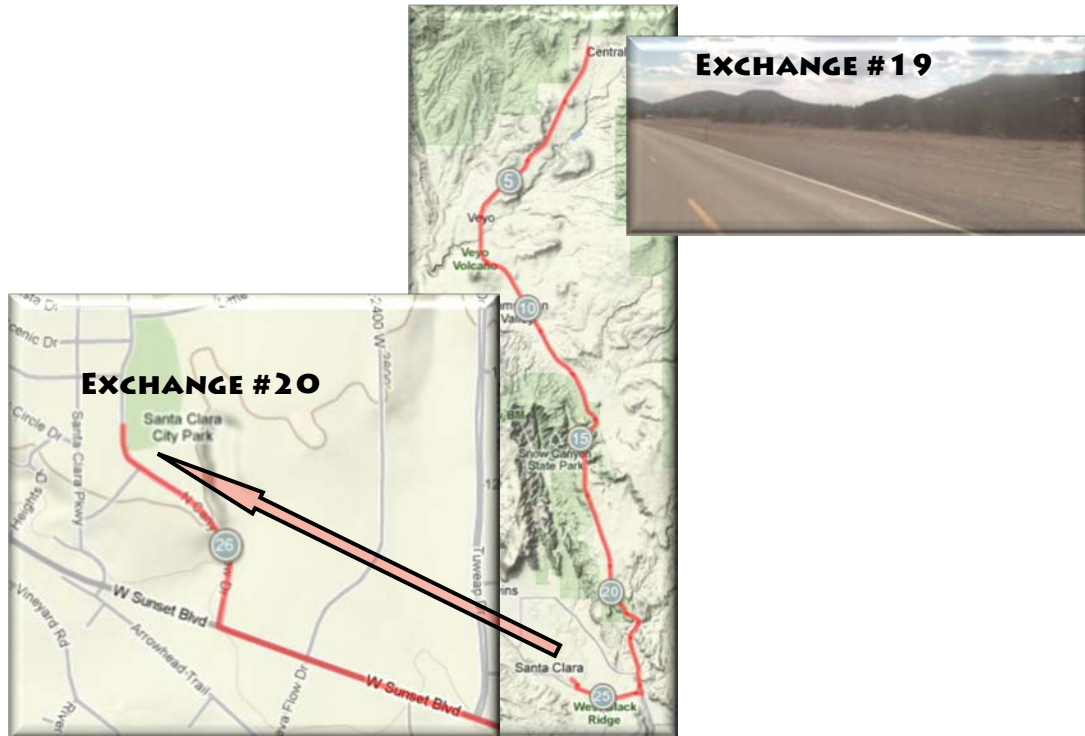
- MIN: 5,223 FT
- MAX: 6,175 FT
- ASCENT: 925 FT
- DESCENT: -996 FT



LEG 20 – 26.5 MILES

EASY

- START OF LEG GPS COORDINATES: **374224, -113.6310**
- START OF LEG ADDRESS: *JUST OFF OF HWY 18 IN CENTRO, UT*
- PLEASE PULL COMPLETELY OFF OF THE ROAD AND DO NOT MAKE ILLEGAL U-TURNS
- RESTROOMS AVAILABLE AT EXCHANGE #20 IN THE PARK
- END OF LEG GPS COORDINATES: **37.1318, -113.6410**
- END OF LEG ADDRESS: *1400 CANYON VIEW DRIVE, SANTA CLARA, UT*



ELEVATION DETAILS:

- MIN: 2,730 FT
- MAX: 5,226 FT
- ASCENT: 295 FT
- DESCENT: -2,700 FT

LEG 21 – 11.0 MILES

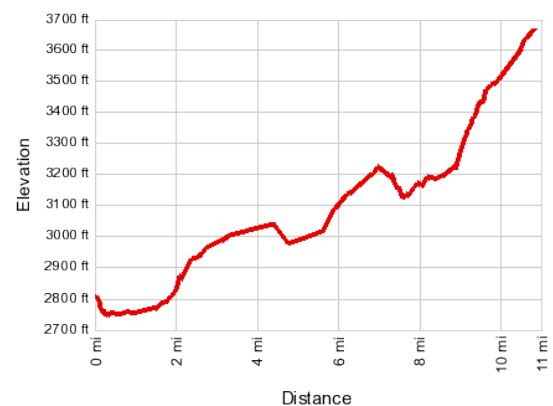
MODERATE - HARD

- START OF LEG GPS COORDINATES: **37.1318, -113.6410**
- START OF LEG ADDRESS: **1400 CANYON VIEW DR., SANTA CLARA, UT**
- VEHICLE 2 WILL HEAD BACK TO I-15 VIA ST. GEORGE AND DRIVE TO EXCHANGE #25 (EXIT #93) TO AWAIT THEIR OTHER TEAM MEMBERS
- PLEASE PULL COMPLETELY OFF THE ROAD AND DO NOT MAKE ILLEGAL U-TURNS
- RESTROOMS AVAILABLE AT EXCHANGE #20 IN THE PARK BUT NOT AT EXCHANGE #21
- END OF LEG GPS COORDINATES: **37.1630, -113.7844**
- END OF LEG ADDRESS: **OLD HWY 91**



ELEVATION DETAILS:

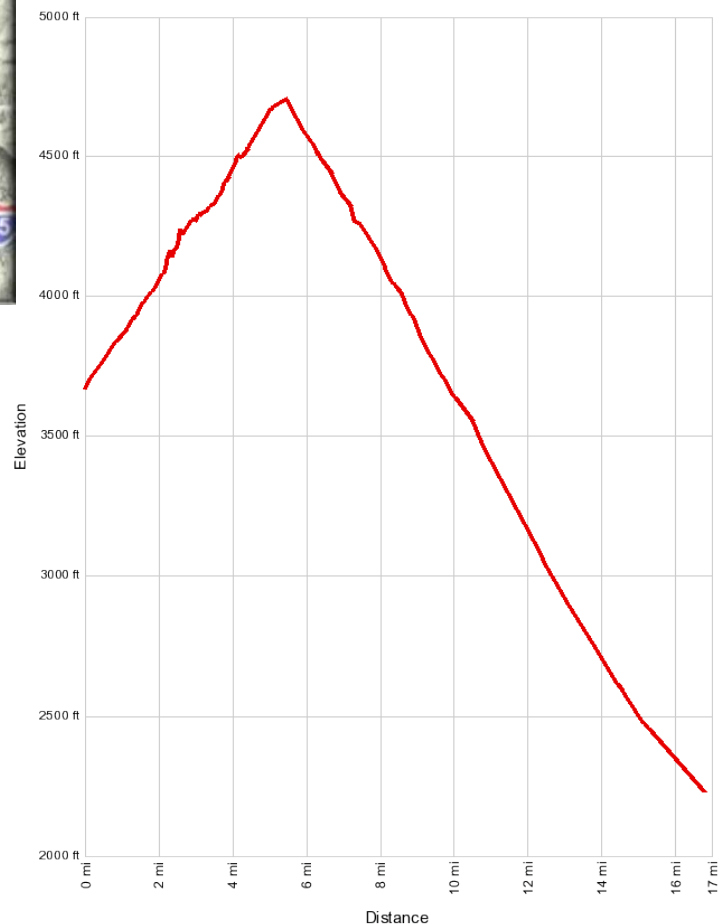
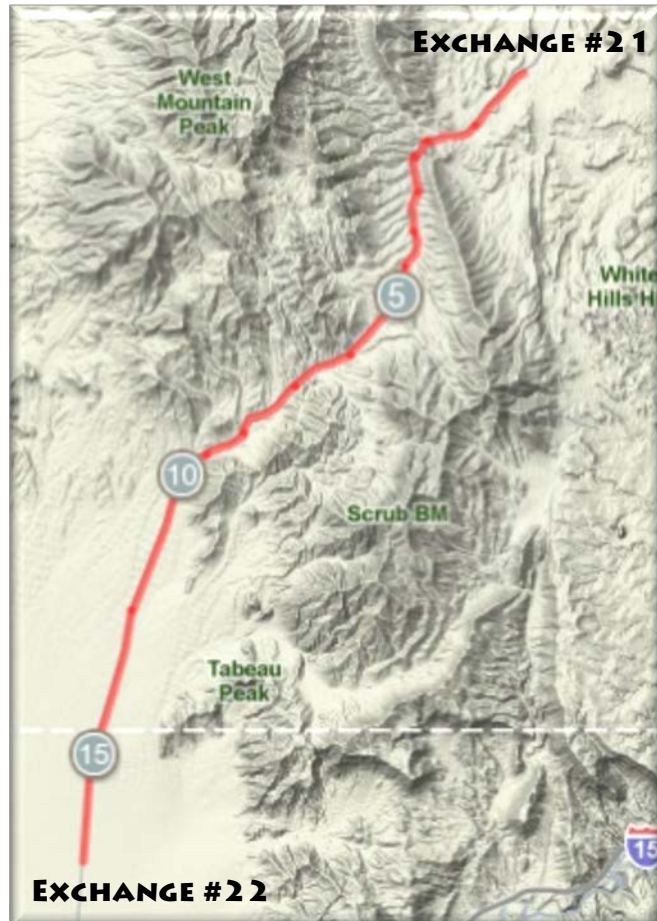
- MIN: 2,743 FT
- MAX: 3,671 FT
- ASCENT: 1,159 FT
- DESCENT: -231 FT



LEG 22 – 16.9 MILES

MODERATE - HARD

- START OF LEG GPS COORDINATES: **37.1630, -113.7844**
- START OF LEG ADDRESS: *OLD HIGHWAY 91*
- PLEASE PULL COMPLETELY OFF THE ROAD AND DO NOT MAKE ILLEGAL U-TURNS
- NO RESTROOMS AVAILABLE AT EXCHANGE #21 & #22
- END OF LEG GPS COORDINATES: **36.9672, -113.9214**
- END OF LEG ADDRESS: *NEAR UT/AZ BORDER ON HWY 91*



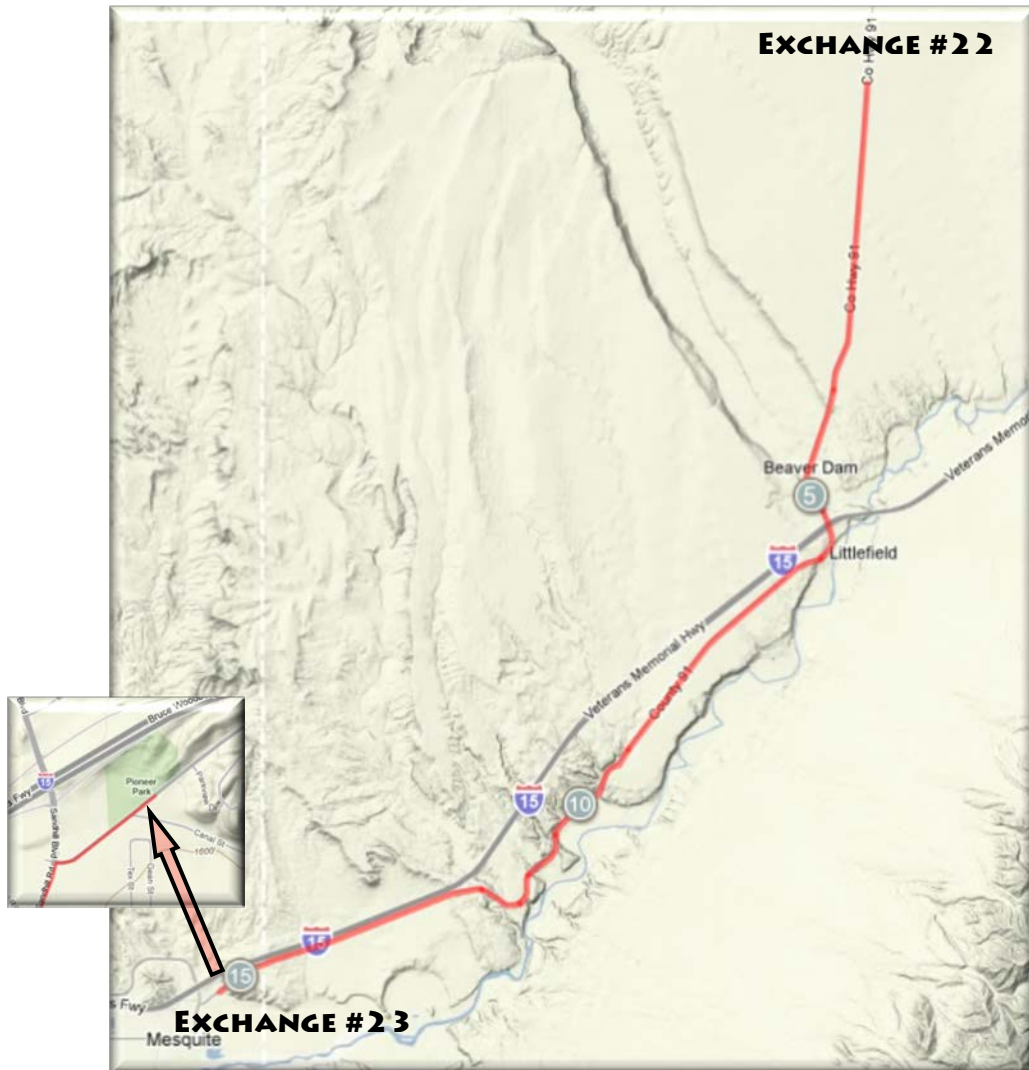
ELEVATION DETAILS:

- MIN: 2,221 FT
- MAX: 4,744 FT
- ASCENT: 951 FT
- DESCENT: -2,523 FT

LEG 23 – 15.4 MILES

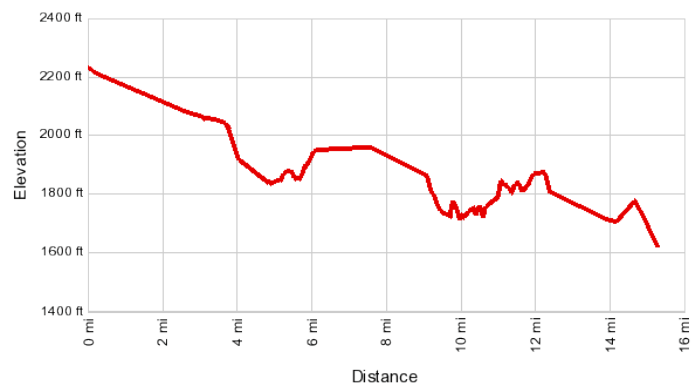
EASY

- START OF LEG GPS COORDINATES: **36.9672, -113.9214**
- START OF LEG ADDRESS: **NEAR AZ/UT BORDER ON HIGHWAY 91**
- LEG ENDS AT PIONEER PARK (RESTROOMS AVAILABLE)
- END OF LEG GPS COORDINATES: **36.8119, -114.0600**
- END OF LEG ADDRESS: **501 HILLSIDE DR., MESQUITE, NV**



ELEVATION DETAILS:

- MIN: 1,640 FT
- MAX: 2,221 FT
- ASCENT: 353 FT
- DESCENT: -748 FT



LEG 24 – 14.5 MILES

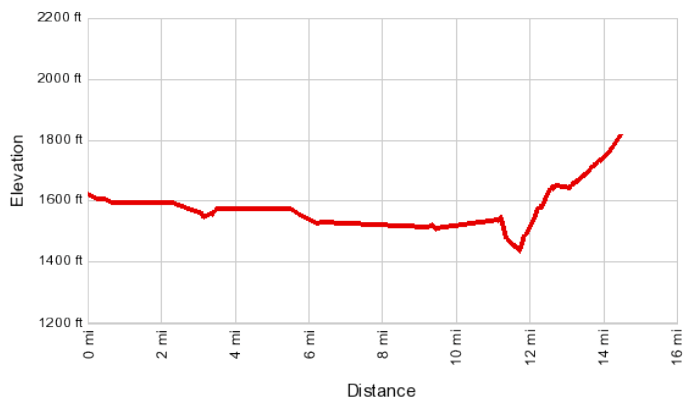
MODERATE

- START OF LEG GPS COORDINATES: **36.8119, -114.0600**
- START OF LEG ADDRESS: 501 HILLSIDE DR., MESQUITE, NV
- LEG BEGINS AT PIONEER PARK (RESTROOMS AVAILABLE)
- END OF LEG GPS COORDINATES: **36.7707, -114.2344**
- END OF LEG ADDRESS: *EXIT 112 OFF OF I-15*



ELEVATION DETAILS:

- MIN: 1,421 FT
- MAX: 1,831 FT
- ASCENT: 423 FT
- DESCENT: -262 FT



LEG 25 – 24.1 MILES

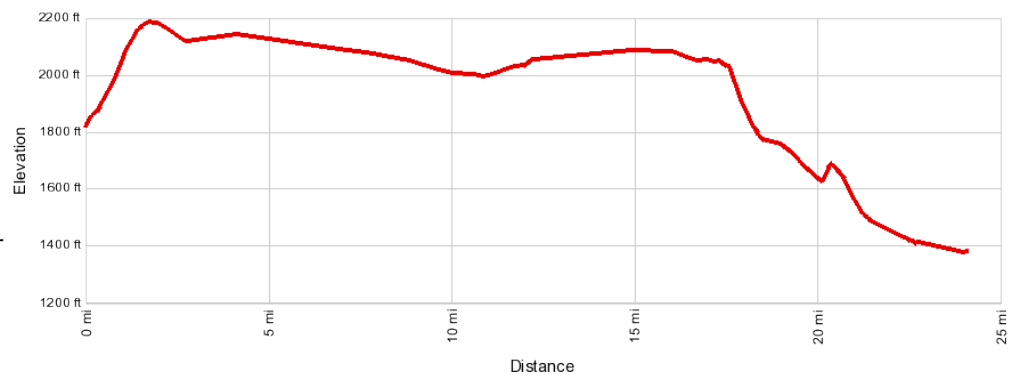
MODERATE

- START OF LEG GPS COORDINATES: **36.7707, -114.2344**
- START OF LEG ADDRESS: **EXIT 112 OFF OF I-15**
- EXIT I-15 ON **EXIT #93** JUST AFTER DROPPING DOWN OFF THE PLATEAU
- VEHICLE #1 (FOR 10 PERSON TEAMS) WILL RETURN TO I-15 AND MEET AT FINISH LINE IN HENDERSON VIA I-15 & I-515 IN LAS VEGAS (VEHICLE #1 WILL NOT CONTINUE ON THE RACE COURSE)
- RESTROOMS AVAILABLE AT EXCHANGE 25
- END OF LEG GPS COORDINATES: **36.6003, -114.4841**
- END OF LEG ADDRESS: **3280 N. MOAPA VALLEY BOULEVARD, LOGANDALE, NV**



ELEVATION DETAILS:

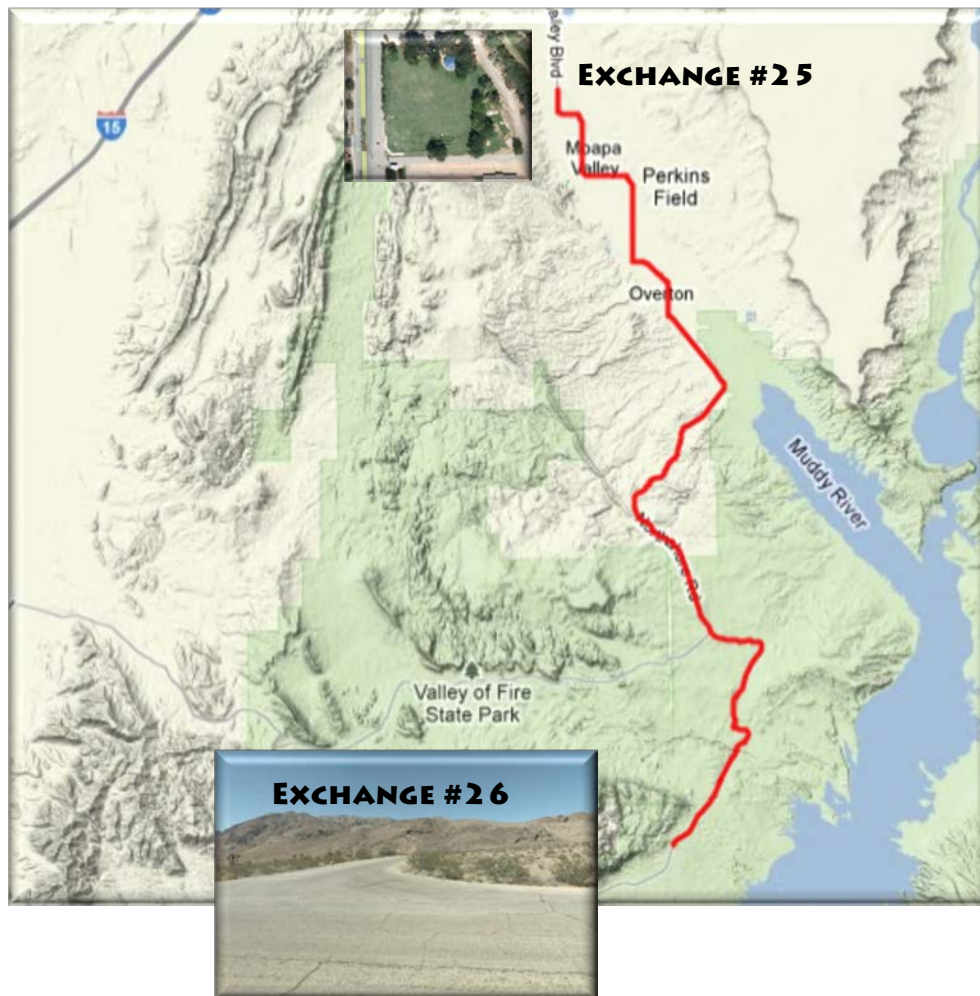
- MIN: 1,385 FT
- MAX: 2,195 FT
- ASCENT: 404 FT
- DESCENT: -889 FT



LEG 26 – 20.7 MILES

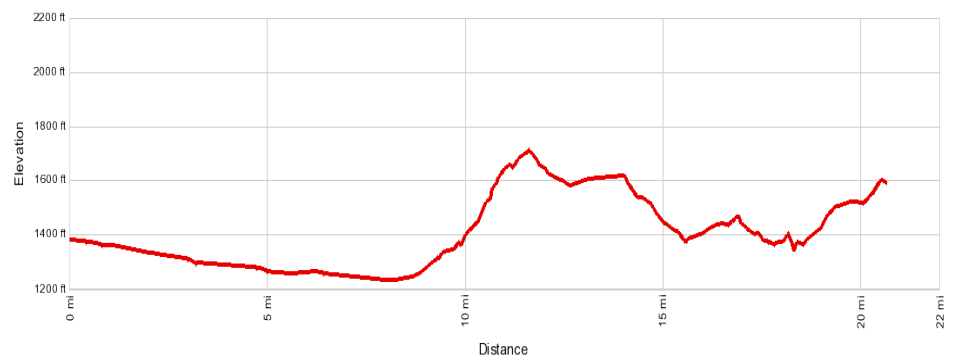
MODERATE – HARD

- START OF LEG GPS COORDINATES: **36.6003, -114.4841**
- START OF LEG ADDRESS: **3280 N. MOAPA VALLEY BOULEVARD, LOGANDALE, NV**
- RESTROOMS AVAILABLE AT EXCHANGE 25 & EXCHANGE 26
- VEHICLE #1 (FOR 10 PERSON TEAMS) WILL RETURN TO I-15 AND MEET AT FINISH LINE IN HENDERSON VIA I-15 & I-515 IN LAS VEGAS (VEHICLE #1 WILL NOT CONTINUE ON THE RACE COURSE)
- END OF LEG GPS COORDINATES: **36.3775, -114.4411**
- END OF LEG ADDRESS: **ROGERS SPRING ON NORTHSORE RD.**



ELEVATION DETAILS:

- MIN: 1,243 FT
- MAX: 1,714 FT
- ASCENT: 822 FT
- DESCENT: -545 FT



LEG 27 – 13.1 MILES

MODERATE - HARD

- START OF LEG GPS COORDINATES: **36.3775, -114.4411**
- START OF LEG ADDRESS: **ROGERS SPRING ON NORTHSHORE RD.**
- RESTROOM AVAILABLE AT START AND END OF LEG
- END OF LEG GPS COORDINATES: **36.2424, -114.5162**
- END OF LEG ADDRESS: **NORTHSHORE RD.**



ELEVATION DETAILS:

- MIN: 1,470 FT
- MAX: 2,388 FT
- ASCENT: 1,220 FT
- DESCENT: -565 FT



LEG 28 – 13.3 MILES

EASY- MODERATE

- START OF LEG GPS COORDINATES: **36.2424, -114.5162**
- START OF LEG ADDRESS: **NORTHSHORE RD.**
- RESTROOM AVAILABLE AT START OF LEG
- END OF LEG GPS COORDINATES: **36.1932, -114.7299**
- END OF LEG ADDRESS: **NORTHSHORE RD.**



ELEVATION DETAILS:

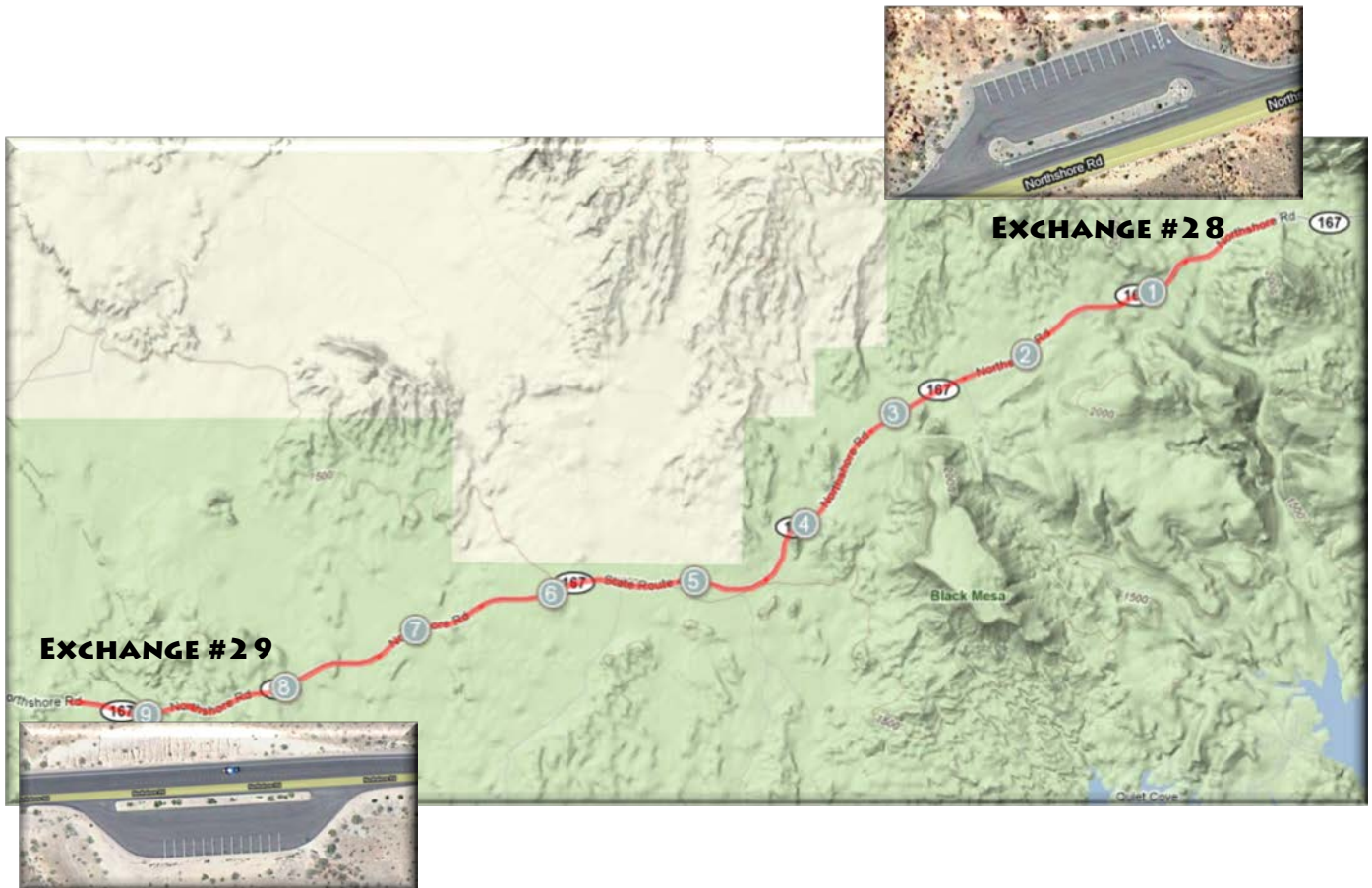
- MIN: 1,657 FT
- MAX: 2,405 FT
- ASCENT: 269 FT
- DESCENT: -897 FT



LEG 29 – 9.5 MILES

EASY

- START OF LEG GPS COORDINATES: **36.1932, -114.7299**
- START OF LEG ADDRESS: *NORTHSHORE RD.*
- END OF LEG GPS COORDINATES: **36.1457, -114.8766**
- END OF LEG ADDRESS: *NORTHSHORE RD.*



ELEVATION DETAILS:

- MIN: 1,263 FT
- MAX: 1,870 FT
- ASCENT: 297 FT
- DESCENT: -764 FT



LEG 30 – 8.9 MILES

MODERATE - HARD

- START OF LEG GPS COORDINATES: **36.1457, -114.8766**
- START OF LEG ADDRESS: ***NORTHSHORE RD.***
- GO THROUGH RANGER STATION (NO NEED TO STOP) AT SOUTH END OF PARK.
- TURN RIGHT ONTO LAKE LAS VEGAS PKWY (SEE RACE BIBLE FOR SPECIFIC DRIVING DIRECTIONS FOR BOTH VEHICLES AND RIDERS).
- FINISH LINE GPS COORDINATES: **36.1135, -114.9238**
- FINISH LINE ADDRESS: ***THE WESTIN HOTEL & RESORT AT LAKE LAS VEGAS (101 MONTELAGO BOULEVARD, HENDERSON, NV)***



ELEVATION DETAILS:

- MIN: 1,283 FT
- MAX: 1,824 FT
- ASCENT: 535 FT
- DESCENT: -548 FT

